

Product datasheet for **TA326874**

RAN Rabbit Polyclonal Antibody

Product data:

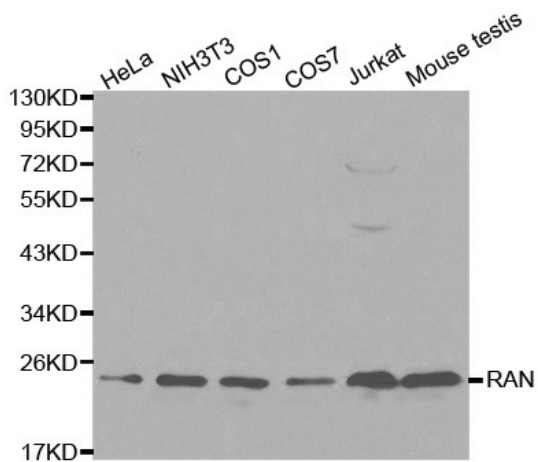
Product Type:	Primary Antibodies
Applications:	ICC/IF, WB
Recommended Dilution:	WB 1:500 - 1:2000;IF 1:50 - 1:200
Reactivity:	Mouse, Rat
Host:	Rabbit
Isotype:	IgG
Clonality:	Polyclonal
Immunogen:	Recombinant protein of human RAN
Formulation:	Store at -20C or -80C. Avoid freeze / thaw cycles. Buffer: PBS with 0.02% sodium azide, 50% glycerol, pH7.3
Concentration:	lot specific
Purification:	Affinity purification
Conjugation:	Unconjugated
Storage:	Store at -20°C as received.
Stability:	Stable for 12 months from date of receipt.
Predicted Protein Size:	25 kDa
Gene Name:	RAN, member RAS oncogene family
Database Link:	NP_006316 Entrez Gene 19384 Mouse Entrez Gene 84509 Rat P62826
Background:	Ran is a small GTPase of the Ras family that plays a central role in the spacial and temporal organization of eukaryotic cells. During interphase, Ran-GDP localizes to the cytoplasm and Ran-GTP to the nucleus. This polarized localization of Ran ensures its role in nuclear transport. During mitosis, Ran-GTP is chromatin associated, where it promotes spindle assembly and nuclear envelope formation. In S phase, Ran-GTP associates with and inhibits MCM helicase, ensuring precise chromosomal DNA duplication during the cell cycle.
Synonyms:	ARA24; Gsp1; TC4



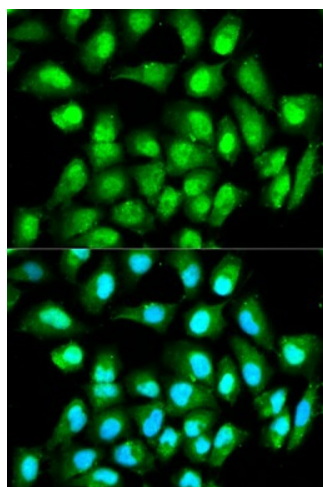
[View online »](#)

Protein Families: Druggable Genome, Transcription Factors

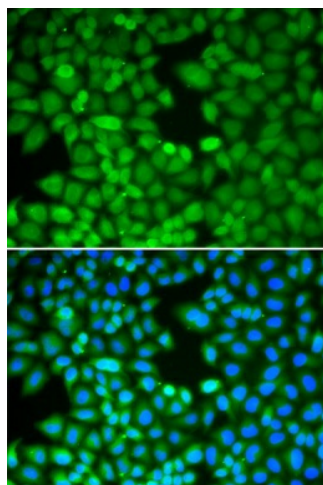
Product images:



Western blot analysis of extracts of various cell lines, using RAN antibody.



Immunofluorescence analysis of HeLa cell using RAN antibody. Blue: DAPI for nuclear staining.



Immunofluorescence analysis of MCF-7 cell using RAN antibody. Blue: DAPI for nuclear staining.