

Product datasheet for **TA326873S**

EEF1A1 Rabbit Polyclonal Antibody

Product data:

Product Type:	Primary Antibodies
Applications:	ICC/IF, WB
Recommended Dilution:	WB 1:500 - 1:2000;IF 1:20- 1:100
Reactivity:	Human, Mouse, Rat
Host:	Rabbit
Isotype:	IgG
Clonality:	Polyclonal
Immunogen:	Recombinant protein of human EEF1A1
Formulation:	Store at -20C or -80C. Avoid freeze / thaw cycles. Buffer: PBS with 0.02% sodium azide, 50% glycerol, pH7.3
Concentration:	lot specific
Purification:	Affinity purification
Conjugation:	Unconjugated
Storage:	Store at -20°C as received.
Stability:	Stable for 12 months from date of receipt.
Gene Name:	eukaryotic translation elongation factor 1 alpha 1
Database Link:	NP_001393 Entrez Gene 13627 Mouse Entrez Gene 171361 Rat Entrez Gene 1915 Human P68104

Background: Translation is the process where amino acid residues are assembled into polypeptides on ribosomes. This process is generally divided into three stages: initiation, elongation and termination. During elongation, mRNA and tRNA pair at the two active sites (A and P sites) on the ribosome. A number of eukaryotic elongation factors (eEFs) are involved in this process in mammalian cells. eEF1A, also called elongation factor Tu (EF-Tu), binds GTP and interacts with amino acyl-tRNAs to promote recruitment of amino acyl-tRNAs to the A-site of the ribosome. After GTP hydrolysis, GDP-eEF1A leaves the ribosome and is later converted back to the GTP-eEF1A by eEF1B. Studies have shown that eEF1A is phosphorylated under certain conditions, indicating that its activity is regulated at the post-translational level.

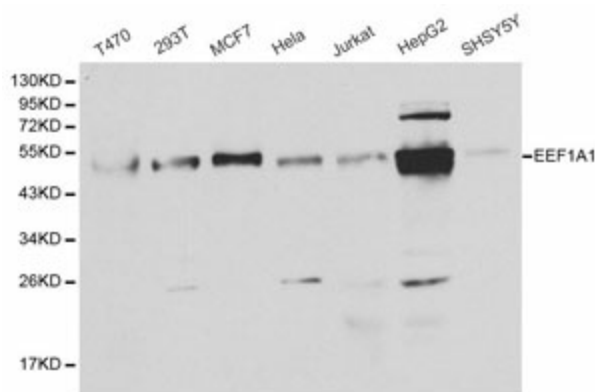


[View online »](#)

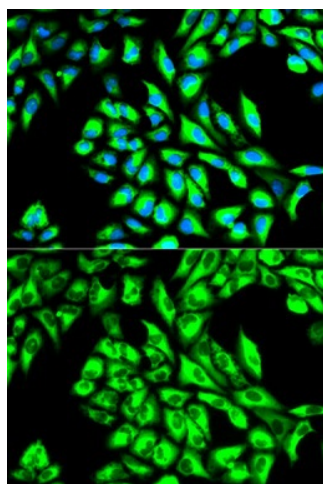
Synonyms: CCS-3; CCS3; EE1A1; EEF-1; EEF1A; eEF1A-1; EF-Tu; EF1A; GRAF-1EF; HNGC:16303; LENG7; PT11

Protein Families: Druggable Genome

Product images:



Western blot analysis of extracts of various cell lines, using EEF1A1 antibody.



Immunofluorescence analysis of HeLa cell using EEF1A1 antibody. Blue: DAPI for nuclear staining.