

## Product datasheet for **TA326868**

### Hsp60 (HSPD1) Rabbit Polyclonal Antibody

#### Product data:

|                         |   |
|-------------------------|---|
| Product Type:           | Primary Antibodies  |
| Applications:           | IF, IHC, WB   |
| Recommended Dilution:   | WB 1:500 - 1:2000;IHC 1:50 - 1:200  |
| Reactivity:             | Human, Mouse, Rat   |
| Host:                   | Rabbit  |
| Isotype:                | IgG   |
| Clonality:              | Polyclonal  |
| Immunogen:              | Recombinant protein of human HSPD1  |
| Formulation:            | Store at -20C or -80C. Avoid freeze / thaw cycles. Buffer: PBS with 0.02% sodium azide, 50% glycerol, pH7.3   |
| Concentration:          | lot specific  |
| Purification:           | Affinity purification   |
| Conjugation:            | Unconjugated  |
| Storage:                | Store at -20°C as received.   |
| Stability:              | Stable for 12 months from date of receipt.  |
| Predicted Protein Size: | 61 kDa  |
| Gene Name:              | heat shock protein family D (Hsp60) member 1  |
| Database Link:          | <a href="#">NP_002147</a><br><a href="#">Entrez Gene 15510 Mouse</a> <a href="#">Entrez Gene 63868 Rat</a> <a href="#">Entrez Gene 3329 Human</a><br><a href="#">P10809</a>   |
| Background:             | In both prokaryotic and eukaryotic cells the misfolding and aggregation of proteins during biogenesis and under conditions of cellular stress are prevented by molecular chaperones. HSP60 has primarily been known as a mitochondrial protein that is important for folding key proteins after import into the mitochondria. It is now clear that a significant amount of HSP60 is also present in the cytosol of many cells and that it is induced by stress, inflammatory and immune responses, autoantibodies correlated with Alzheimers, coronary artery diseases, MS, and diabetes. |
| Synonyms:               | CPN60; GROEL; HLD4; HSP-60; HSP60; HSP65; HuCHA60; SPG13  |

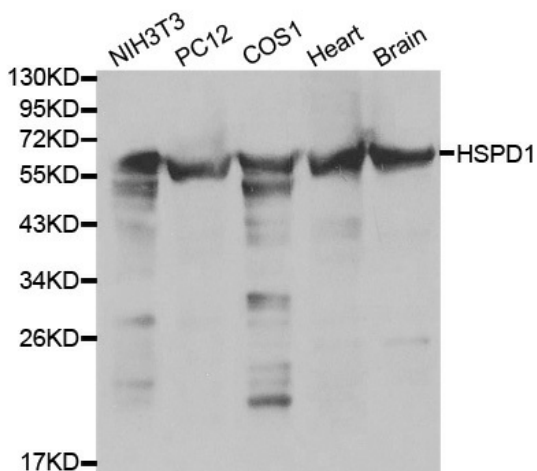


[View online »](#)

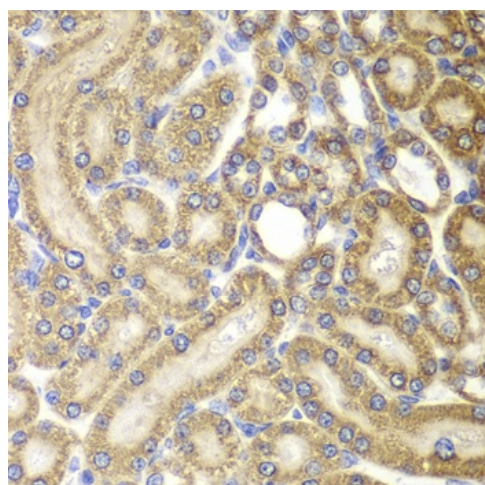
**Protein Families:** Druggable Genome, Stem cell - Pluripotency

**Protein Pathways:** RNA degradation, Type I diabetes mellitus

**Product images:**



Western blot analysis of extracts of various cell lines, using HSPD1 antibody.



Immunohistochemistry of paraffin-embedded rat kidney using HSPD1 antibody at dilution of 1:100 (400x lens).