

Product datasheet for **TA326867**

Parkin (PARK2) Rabbit Polyclonal Antibody

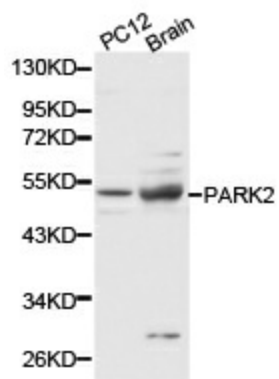
Product data:

Product Type:	Primary Antibodies
Applications:	IHC, WB
Recommended Dilution:	WB 1:500 - 1:2000
Reactivity:	Human, Mouse, Rat
Host:	Rabbit
Isotype:	IgG
Clonality:	Polyclonal
Immunogen:	Recombinant protein of human PARK2
Formulation:	Store at -20C or -80C. Avoid freeze / thaw cycles. Buffer: PBS with 0.02% sodium azide, 50% glycerol, pH7.3
Concentration:	lot specific
Purification:	Affinity purification
Conjugation:	Unconjugated
Storage:	Store at -20°C as received.
Stability:	Stable for 12 months from date of receipt.
Gene Name:	parkin RBR E3 ubiquitin protein ligase
Database Link:	NP_054642 Entrez Gene 50873 Mouse Entrez Gene 56816 Rat Entrez Gene 5071 Human O60260
Background:	Parkin is a protein of 465 amino acids with an amino-terminal ubiquitin domain and a carboxy-terminal RING-box. In the case of autosomal recessive juvenile Parkinsonism (AR-JP), deletions have been found in the gene on chromosome 6 encoding the protein Parkin.
Synonyms:	AR-JP; LPRS2; PDJ; PRKN
Protein Pathways:	Parkinson's disease, Ubiquitin mediated proteolysis



[View online »](#)

Product images:



Western blot analysis of PC12 cell and brain cell lysate using PARK2 antibody.