

Product datasheet for **TA326860S**

Integrin Linked Kinase (ILK) Rabbit Polyclonal Antibody

Product data:

Product Type:	Primary Antibodies
Applications:	IHC, WB
Recommended Dilution:	WB: 1:500-1:1000
Reactivity:	Human, Mouse, Rat
Host:	Rabbit
Isotype:	IgG
Clonality:	Polyclonal
Immunogen:	Recombinant protein of human ILK
Formulation:	Store at -20C or -80C. Avoid freeze / thaw cycles. Buffer: PBS with 0.02% sodium azide, 50% glycerol, pH7.3
Concentration:	lot specific
Purification:	Affinity purification
Conjugation:	Unconjugated
Storage:	Store at -20°C as received.
Stability:	Stable for 12 months from date of receipt.
Gene Name:	integrin linked kinase
Database Link:	NP_004508 Entrez Gene 16202 Mouse Entrez Gene 170922 Rat Entrez Gene 3611 Human Q13418



[View online »](#)

Background:

Integrin-linked kinases (ILKs) couple integrins and growth factors to downstream pathways involved in cell survival, cell cycle control, cell-cell adhesion and cell motility. ILK functions as a scaffold bridging the extracellular matrix (ECM) and growth factor receptors to the actin cytoskeleton through interactions with integrin, PINCH (which links ILK to the RTKs via Nck2), CH-ILKBP and affixin. ILK phosphorylates Akt at Ser473, GSK-3 on Ser9, myosin light chain 2 (MLC2) on Ser18/Thr19, as well as affixin. These phosphorylation events are key regulatory steps in modulating the activities of the targets. ILK activity is stimulated by PI3 kinase and negatively regulated by the tumor suppressor PTEN and a PP2C protein phosphatase, ILKAP. It has been suggested that the conserved Ser343 residue in the activation loop plays a key role in the activation of ILK1.

Synonyms:

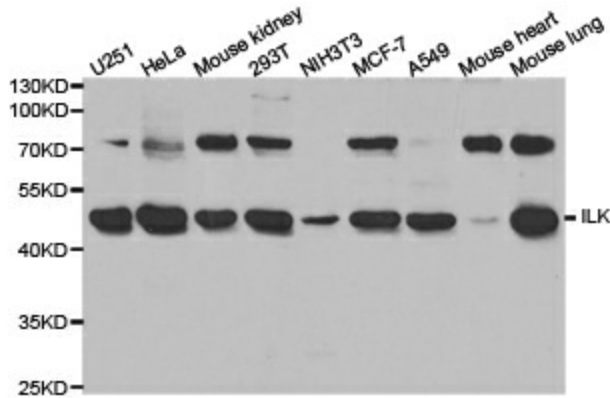
HEL-S-28; ILK-1; ILK-2; P59; p59ILK

Protein Families:

Druggable Genome, Protein Kinase

Protein Pathways:

Endometrial cancer, Focal adhesion, PPAR signaling pathway

Product images:


Western blot analysis of extracts of various cell lines, using ILK antibody.