

Product datasheet for **TA326853**

BMP7 Rabbit Polyclonal Antibody

Product data:

Product Type:	Primary Antibodies
Applications:	ICC/IF, IHC, WB
Recommended Dilution:	WB: 1:500-1:2000
Reactivity:	Human, Mouse, Rat
Host:	Rabbit
Isotype:	IgG
Clonality:	Polyclonal
Immunogen:	Recombinant protein of human BMP7
Formulation:	Store at -20C or -80C. Avoid freeze / thaw cycles. Buffer: PBS with 0.02% sodium azide, 50% glycerol, pH7.3
Concentration:	lot specific
Purification:	Affinity purification
Conjugation:	Unconjugated
Storage:	Store at -20°C as received.
Stability:	Stable for 12 months from date of receipt.
Gene Name:	bone morphogenetic protein 7
Database Link:	NP_001710 Entrez Gene 12162 Mouse Entrez Gene 85272 Rat Entrez Gene 655 Human P18075

Background: Bone morphogenetic proteins (BMPs) were first identified as molecules that can induce ectopic bone and cartilage formation. BMPs belongs to the TGF- β superfamily, playing many diverse functions during development. BMPs are synthesized as precursor proteins and then processed by cleavage to release the c-terminal mature BMP. BMPs initiate signaling by binding to a receptor complex containing type I and type II serine/threonine receptor kinases that then phosphorylate Smad (mainly Smad1, 5 and 8), resulting the translocation of Smad into the nucleus. BMP was also reported to activate MAPK pathways in some systems. BMP7, also known as osteogenic protein-1 (OP-1), is found to be upregulated in some cancer cells, and may play a role in cancer metastasis.



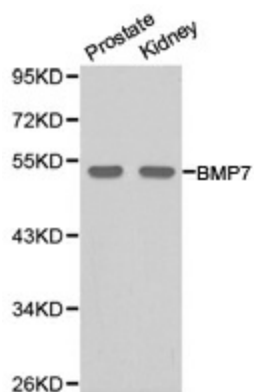
[View online »](#)

Synonyms: OP-1

Protein Families: Adult stem cells, Cancer stem cells, Druggable Genome, Embryonic stem cells, ES Cell Differentiation/IPS, Induced pluripotent stem cells, Secreted Protein, Stem cell relevant signaling - TGFb/BMP signaling pathway

Protein Pathways: Cytokine-cytokine receptor interaction, Hedgehog signaling pathway, TGF-beta signaling pathway

Product images:



Western blot analysis of Prostate cell and Kidney cell lysate using BMP7 antibody.