

## Product datasheet for **TA326852S**

### MMP7 Rabbit Polyclonal Antibody

#### Product data:

Product Type:	Primary Antibodies
Applications:	ICC/IF, IHC, WB
Recommended Dilution:	WB: 1:500-1:2000
Reactivity:	Human, Rat
Host:	Rabbit
Isotype:	IgG
Clonality:	Polyclonal
Immunogen:	Recombinant protein of human MMP7
Formulation:	Store at -20C or -80C. Avoid freeze / thaw cycles. Buffer: PBS with 0.02% sodium azide, 50% glycerol, pH7.3
Concentration:	lot specific
Purification:	Affinity purification
Conjugation:	Unconjugated
Storage:	Store at -20°C as received.
Stability:	Stable for 12 months from date of receipt.
Gene Name:	matrix metalloproteinase 7
Database Link:	<a href="#">NP_002414</a> <a href="#">Entrez Gene 25335 Rat</a> <a href="#">Entrez Gene 4316 Human</a> <a href="#">P09237</a>

**Background:** The matrix metalloproteinases (MMPs) are a family of proteases that target many extracellular proteins including other proteases, growth factors, cell surface receptors and adhesion molecules. Among the family members, MMP-2, MMP-3, MMP-7 and MMP-9 have been characterized as important factors for normal tissue remodeling during embryonic development, wound healing, tumor invasion, angiogenesis, carcinogenesis and apoptosis. MMP activity correlates with cancer development. One mechanism of MMP regulation is transcriptional. Once synthesized, MMP exists as a latent proenzyme. Maximum MMP activity requires proteolytic cleavage to generate active MMPs by releasing the inhibitory propeptide domain from the full length protein.



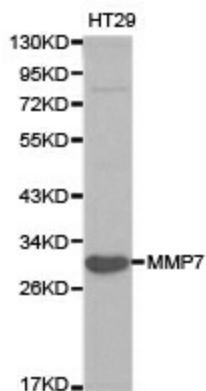
[View online »](#)

Synonyms: MMP-7; MPSL1; PUMP-1

Protein Families: Druggable Genome, Protease

Protein Pathways: Wnt signaling pathway

### Product images:



Western blot analysis of HT29 cell lysate using MMP7 antibody.