

Product datasheet for **TA326850**

KIAA0652 (ATG13) Rabbit Polyclonal Antibody

Product data:

Product Type:	Primary Antibodies
Applications:	ICC/IF, WB
Recommended Dilution:	WB 1:500 - 1:2000;IF 1:50- 1:200
Reactivity:	Human, Mouse, Rat
Host:	Rabbit
Isotype:	IgG
Clonality:	Polyclonal
Immunogen:	Recombinant protein of human ATG13
Formulation:	Store at -20C or -80C. Avoid freeze / thaw cycles. Buffer: PBS with 0.02% sodium azide, 50% glycerol, pH7.3
Concentration:	lot specific
Purification:	Affinity purification
Conjugation:	Unconjugated
Storage:	Store at -20°C as received.
Stability:	Stable for 12 months from date of receipt.
Gene Name:	autophagy related 13
Database Link:	NP_055556 Entrez Gene 51897 Mouse Entrez Gene 362164 Rat Entrez Gene 9776 Human O75143



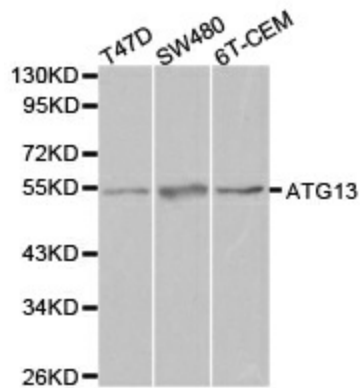
[View online »](#)

Background:

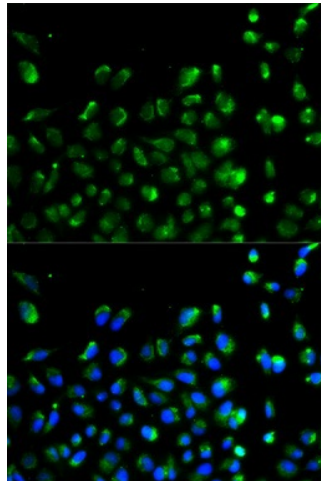
The autophagy-related protein 13 (Atg13) plays an important role in the formation of autophagosomes. Autophagosomes are formed in response to nutrient deprivation and function as the transport vesicles for organelles, proteins, and protein complexes targeted for lysosomes that digest these cargos to produce energy and nutrients. Atg13 is activated by the mTOR pathway and forms a complex with the FIP200 protein. This complex is involved in enhancing the activity of the ULK1 kinase which is required for the formation of autophagosomes. Atg13/FIP200 facilitates the localization of ULK1 to pre-autophagosomes, and subsequently stabilizes ULK1. Autophagy is an important process in development, growth, and cell differentiation, and disruption of this process may contribute to cancer, aging, and neurodegenerative diseases.

Synonyms:

KIAA0652; PARATARG8

Product images:


Western blot analysis of extracts of various cell lines, using ATG13 antibody.



Immunofluorescence analysis of A549 cell using ATG13 antibody. Blue: DAPI for nuclear staining.