

Name:NRG1 Rabbit Polyclonal Antibody
Product Data Sheet - ANTIBODY**Catalog: TA326848**

Components:	• NRG1 Rabbit Polyclonal Antibody (TA326848)
Amount:	100ug
Immunogen:	Recombinant protein of human NRG1
Host:	Rabbit
Isotype:	IgG
Species Reactivity:	Human, Mouse, Rat
Guaranteed Applications:	WB
Suggested Dilutions:	WB: 1:500-1:2000; IHC: 1:50-1:200
Concentration:	1mg/ml
Buffer:	Store at -20C or -80C. Avoid freeze / thaw cycles. Buffer: PBS with 0.02% sodium azide, 50% glycerol, pH7.3
Purification:	Affinity purification
Storage Condition:	Shipped at -20C or with ice packs. Upon delivery store at -20C. Dilute in PBS (pH7.3) if necessary. Stable for 12 months from date of receipt. Avoid repeated freeze-thaws.

Target

Target Name:	neuregulin 1
Alternative Name:	ARIA GGF GGF2 HGL HRG HRG1 HRGA MST131 MSTP131 NDF NRG1-IT2 SMDF
Database Link:	NP_039250 Entrez Gene 3084 Human Entrez Gene 211323 Mouse Entrez Gene 112400 Rat
Function:	Heregulin (HRG), also called neuregulin (NRG1), neu differentiation factor (NDF) or glial growth factor-2 (GGF-2), is a soluble growth factor synthesized as a transmembrane precursor molecule. Metalloproteinases and other proteases catalyze the cleavage of its extracellular domain which is then released and functions as a ligand for ErbB3 and ErbB4 receptor tyrosine kinase. The signaling pathways of HRG-ErbB3/ErbB4 are involved in regulation of cell proliferation, differentiation, invasion, and survival of both normal and malignant tissues. Abnormality of HRG-ErbB signaling leads to

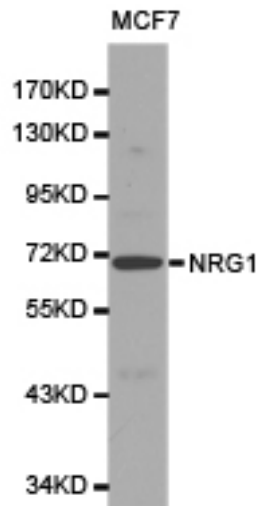
This product is to be used for laboratory only. Not for diagnostic or therapeutic use.

development of a variety of human diseases. HRG family has four isoforms including HRG-1, -2, -3 and -4, which are derived from alternative exon splicing. Moreover, they showed various tissue expression and biological activities.

This product is to be used for laboratory only. Not for diagnostic or therapeutic use.

© 2017 OriGene Technologies, Inc. 9620 Medical Center Dr., Suite 200, Rockville, MD 20850

Validation Data



Western blot analysis of MCF7 cell lysate using NRG1 antibody.

* More validation images may be available on our website: <http://www.origene.com/antibody/TA326848.aspx>

This product is to be used for laboratory only. Not for diagnostic or therapeutic use.

© 2017 OriGene Technologies, Inc. 9620 Medical Center Dr., Suite 200, Rockville, MD 20850
