

Product datasheet for **TA326846S**

STEAP3 Rabbit Polyclonal Antibody

Product data:

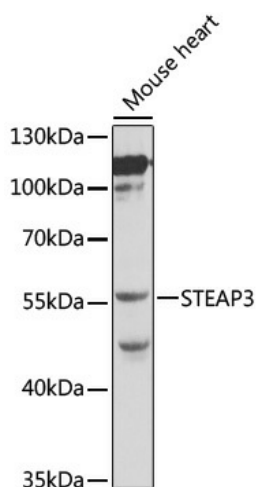
Product Type:	Primary Antibodies
Applications:	ELISA, WB
Recommended Dilution:	WB, 1:500 - 1:2000 ELISA, Recommended starting concentration is 1 µg/mL. Please optimize the concentration based on your specific assay requirements.
Reactivity:	Mouse, Human
Host:	Rabbit
Isotype:	IgG
Clonality:	Polyclonal
Formulation:	Store at -20°C or -80°C. Avoid freeze / thaw cycles. Buffer: PBS with 0.02% sodium azide, 50% glycerol, pH7.3
Concentration:	lot specific
Purification:	Affinity purification
Conjugation:	Unconjugated
Storage:	Store at -20°C. Avoid freeze / thaw cycles.
Stability:	Stable for 12 months from date of receipt.
Predicted Protein Size:	55kDa
Gene Name:	STEAP3 metalloredutase
Database Link:	NP_060704 Entrez Gene 68428 Mouse Entrez Gene 55240 Human Q658P3
Background:	This gene encodes a multipass membrane protein that functions as an iron transporter. The encoded protein can reduce both iron (Fe ³⁺) and copper (Cu ²⁺) cations. This protein may mediate downstream responses to p53, including promoting apoptosis. Deficiency in this gene can cause anemia. Alternative splicing results in multiple transcript variants.
Synonyms:	AHMIO2; dudlin-2; dudulin-2; pHyde; STMP3; TSAP6
Protein Families:	Transmembrane



[View online »](#)

Protein Pathways: p53 signaling pathway

Product images:



Western blot analysis of lysates from mouse heart