

Product datasheet for **TA326824S**

IL2 Rabbit Polyclonal Antibody

Product data:

Product Type:	Primary Antibodies
Applications:	WB
Recommended Dilution:	WB 1:500 - 1:2000
Reactivity:	Human
Host:	Rabbit
Isotype:	IgG
Clonality:	Polyclonal
Immunogen:	Recombinant protein of human IL2
Formulation:	Store at -20C or -80C. Avoid freeze / thaw cycles. Buffer: PBS with 0.02% sodium azide, 50% glycerol, pH7.3
Concentration:	lot specific
Purification:	Affinity purification
Conjugation:	Unconjugated
Storage:	Store at -20°C as received.
Stability:	Stable for 12 months from date of receipt.
Predicted Protein Size:	18 kDa
Gene Name:	interleukin 2
Database Link:	NP_000577 Entrez Gene 3558 Human P60568



[View online »](#)

Background:

IL-2 is a T cell stimulatory cytokine best known for inducing T cell proliferation and NK cell proliferation and activation. IL-2 also promotes peripheral development of Treg cells. Conversely, IL-2 is involved in activation induced cell death (AICD) that is observed post T cell expansion by increasing levels of Fas on CD4+ T cells. The effects of IL-2 are mediated through a trimeric receptor complex consisting of IL-2Ra, IL-2R β and the common gamma chain, γ c. IL-2 Ra binds exclusively to IL-2 with low affinity and increases binding affinity of the whole receptor complex including IL-2R β and γ c subunits. IL-2R β is also used by IL-15. The common γ c is used by other cytokines including IL-4, IL-7, IL-9, IL-15, and IL-21. Binding of IL-2 initiates signaling cascades involving Jak1, Jak3, Stat5 and the PI3K/Akt pathways.

Synonyms:

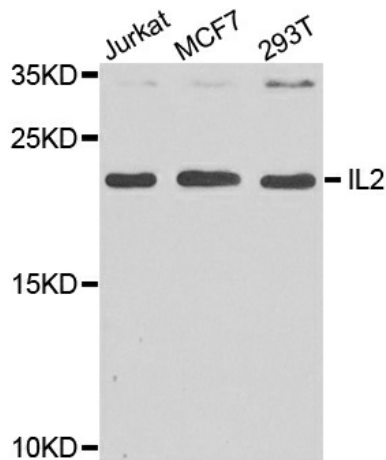
IL-2; lymphokine; TCGF

Protein Families:

Druggable Genome, Secreted Protein

Protein Pathways:

Allograft rejection, Autoimmune thyroid disease, Cytokine-cytokine receptor interaction, Graft-versus-host disease, Jak-STAT signaling pathway, T cell receptor signaling pathway, Type I diabetes mellitus

Product images:

Western blot analysis of extract of various cells, using IL2 antibody.