

Product datasheet for **TA326818**

VCAM1 Rabbit Polyclonal Antibody

Product data:

Product Type:	Primary Antibodies
Applications:	WB
Recommended Dilution:	WB 1:500 - 1:2000
Reactivity:	Human, Mouse
Host:	Rabbit
Isotype:	IgG
Clonality:	Polyclonal
Immunogen:	Recombinant Protein of human VCAM1
Formulation:	Store at -20C or -80C. Avoid freeze / thaw cycles. Buffer: PBS with 0.02% sodium azide, 50% glycerol, pH7.3
Concentration:	lot specific
Purification:	Affinity purification
Conjugation:	Unconjugated
Storage:	Store at -20°C as received.
Stability:	Stable for 12 months from date of receipt.
Predicted Protein Size:	81 kDa
Gene Name:	vascular cell adhesion molecule 1
Database Link:	NP_001069 Entrez Gene 22329 Mouse Entrez Gene 7412 Human P19320
Background:	Vascular cell adhesion protein 1 (VCAM1) is important in cell-cell recognition. It has been reported to function in leukocyte-endothelial cell adhesion, interact with the beta-1 integrin VLA4 on leukocytes, and mediate both adhesion and signal transduction. There are two isoforms; Isoform 1, a single-pass type I membrane protein, and isoform 2, a lipid-anchor (GPI-anchor). VCAM1 is expressed on inflamed vascular endothelium, as well as on macrophage-like and dendritic cell types in both normal and inflamed tissue. It is also expressed in the bone marrow .
Synonyms:	CD106; INCAM-100

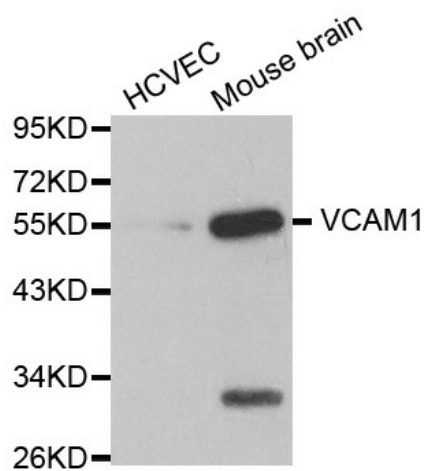


[View online »](#)

Protein Families: Druggable Genome, ES Cell Differentiation/IPS, Transmembrane

Protein Pathways: Cell adhesion molecules (CAMs), Leukocyte transendothelial migration

Product images:



Western blot analysis of extracts of various cell lines, using VCAM1 antibody.