

## Product datasheet for **TA326814S**

### STAT5B Rabbit Polyclonal Antibody

#### Product data:

Product Type:	Primary Antibodies
Applications:	ICC/IF, WB
Recommended Dilution:	WB 1:500 - 1:2000;IF 1:50 - 1:200
Reactivity:	Human, Rat
Host:	Rabbit
Isotype:	IgG
Clonality:	Polyclonal
Immunogen:	Recombinant protein of human STAT5B
Formulation:	Store at -20C or -80C. Avoid freeze / thaw cycles. Buffer: PBS with 0.02% sodium azide, 50% glycerol, pH7.3
Concentration:	lot specific
Purification:	Affinity purification
Conjugation:	Unconjugated
Storage:	Store at -20°C as received.
Stability:	Stable for 12 months from date of receipt.
Predicted Protein Size:	90 kDa
Gene Name:	signal transducer and activator of transcription 5B
Database Link:	<a href="#">NP_036580</a> <a href="#">Entrez Gene 25126 Rat</a> <a href="#">Entrez Gene 6777 Human</a> <a href="#">P51692</a>
Background:	Stat5 is activated in response to a wide variety of ligands including IL-2, GM-CSF, growth hormone and prolactin. Phosphorylation at Tyr694 is obligatory for Stat5 activation. This phosphorylation is mediated by Src upon erythropoietin stimulation. Stat5 is constitutively active in some leukemic cell types. Phosphorylated Stat5 is found in some endothelial cells treated with IL-3, which suggests its involvement in angiogenesis and cell motility. Stat5a and Stat5b are independently regulated and activated in various cell types. For instance, interferon treatment predominantly activates Stat5a in U-937 cells and Stat5b in HeLa cells.
Synonyms:	STAT5

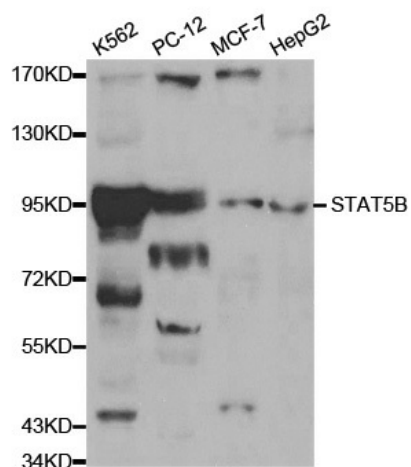


[View online »](#)

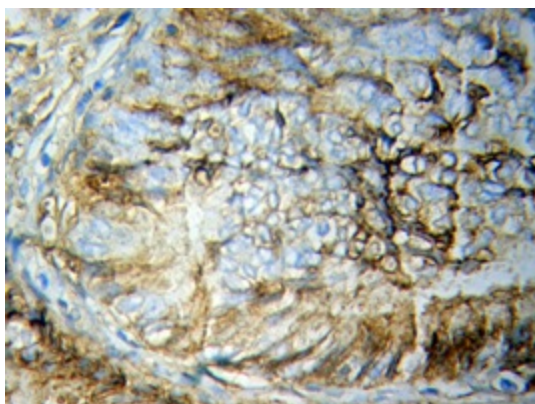
**Protein Families:** Druggable Genome, ES Cell Differentiation/IPS, Stem cell relevant signaling - JAK/STAT signaling pathway, Transcription Factors

**Protein Pathways:** Acute myeloid leukemia, Chemokine signaling pathway, Chronic myeloid leukemia, ErbB signaling pathway, Jak-STAT signaling pathway, Pathways in cancer

### Product images:



Western blot analysis of extracts of various cell lines, using STAT5B antibody.



Immunofluorescence analysis of HeLa cell using STAT5B antibody. Blue: DAPI for nuclear staining.