

Product datasheet for **TA326812S**

SIRT2 Rabbit Polyclonal Antibody

Product data:

Product Type:	Primary Antibodies
Applications:	ICC/IF, IHC, WB
Recommended Dilution:	WB 1:500 - 1:2000;IF 1:10 - 1:100
Reactivity:	Human, Mouse, Rat
Host:	Rabbit
Isotype:	IgG
Clonality:	Polyclonal
Immunogen:	Recombinant protein of human SIRT2
Formulation:	Store at -20C or -80C. Avoid freeze / thaw cycles. Buffer: PBS with 0.02% sodium azide, 50% glycerol, pH7.3
Concentration:	lot specific
Purification:	Affinity purification
Conjugation:	Unconjugated
Storage:	Store at -20°C as received.
Stability:	Stable for 12 months from date of receipt.
Predicted Protein Size:	43 kDa
Gene Name:	sirtuin 2
Database Link:	NP_036369 Entrez Gene 64383 Mouse Entrez Gene 361532 Rat Entrez Gene 22933 Human Q8IXJ6



[View online »](#)

Background:

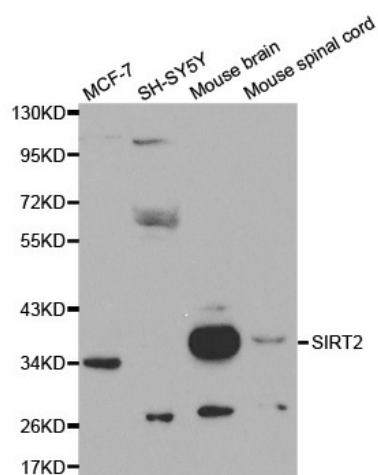
Sirtuins are members of the NAD-dependent histone deacetylase family of proteins that participate in a variety of cellular functions, including histone deacetylation, gene silencing, chromosomal stability, and aging. SIRT2, a human homolog of the yeast SIR2 (silent information regulator-2), functions as transcriptional silencing mediator at mating-type loci, telomeres and ribosomal gene clusters. SIRT2 expression increases dramatically during mitosis and is multiply phosphorylated at the G(2)/M transition of the cell cycle. SIRT2 is part of a phosphorylation cascade where it is phosphorylated late in G(2), during M, and into the period of cytokinesis. Inhibition of SIRT2 is reported to rescue alpha-synuclein toxicity and modify inclusion morphology in a cellular model of Parkinsons disease.

Synonyms:

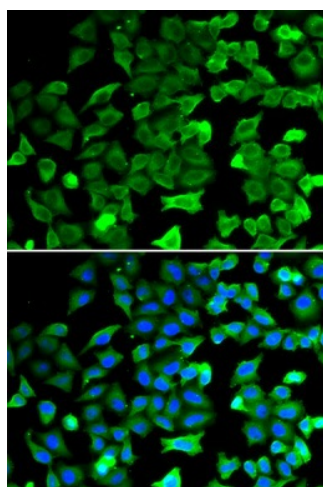
SIR2; SIR2L; SIR2L2

Protein Families:

Druggable Genome, Transcription Factors

Product images:

Western blot analysis of extracts of various cell lines, using SIRT2 antibody.



Immunofluorescence analysis of HeLa cell using SIRT2 antibody. Blue: DAPI for nuclear staining.