

## Product datasheet for **TA326796**

### Cytokeratin 20 (KRT20) Rabbit Polyclonal Antibody

#### Product data:

Product Type:	Primary Antibodies
Applications:	ICC/IF, WB
Recommended Dilution:	WB 1:500 - 1:2000;IF 1:50- 1:200
Reactivity:	Human, Mouse
Host:	Rabbit
Isotype:	IgG
Clonality:	Polyclonal
Immunogen:	Recombinant protein of human KRT20
Formulation:	Store at -20C or -80C. Avoid freeze / thaw cycles. Buffer: PBS with 0.02% sodium azide, 50% glycerol, pH7.3
Concentration:	lot specific
Purification:	Affinity purification
Conjugation:	Unconjugated
Storage:	Store at -20°C as received.
Stability:	Stable for 12 months from date of receipt.
Gene Name:	keratin 20
Database Link:	<a href="#">NP_061883</a> <a href="#">Entrez Gene 66809 Mouse</a> <a href="#">Entrez Gene 54474 Human</a> <a href="#">P35900</a>

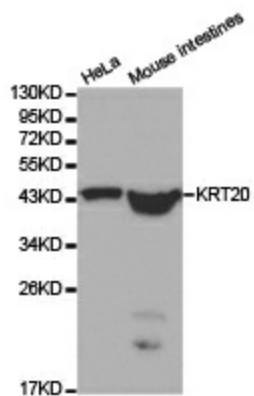
**Background:** Intermediate-sized filament (IF) protein designated cytokeratin (CK) 20 is a major cellular protein of mature enterocytes and goblet cells commonly found in mucosal epithelium of the mammalian gastrointestinal tract. Results strongly suggest that transcriptional regulation of keratin genes in the intestinal epithelium occurs at the level of both immature and terminally differentiated epithelial cells, and is tightly regulated during both fetal development and crypt-to-villus differentiation of the intestinal epithelium. CK20 has recently been reported to be useful to distinguish between primary and metastatic lung adenocarcinoma. CK20 expression was significantly more prevalent in adenocarcinoma that originated in the GI tract than that of pulmonary or breast origin.



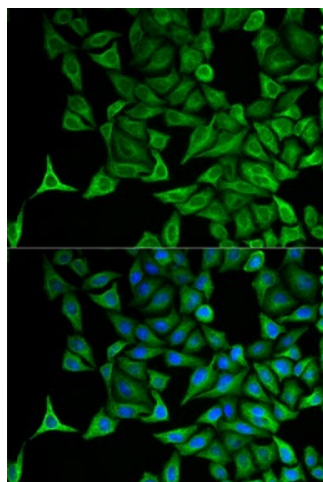
[View online »](#)

Synonyms: CD20; CK-20; CK20; K20; KRT21

### Product images:



Western blot analysis of extracts from HeLa cell and mouse intestines tissue, using KRT20 antibody.



Immunofluorescence analysis of HeLa cell using KRT20 antibody. Blue: DAPI for nuclear staining.