

## Product datasheet for **TA326793**

### **IKBKE Rabbit Polyclonal Antibody**

#### **Product data:**

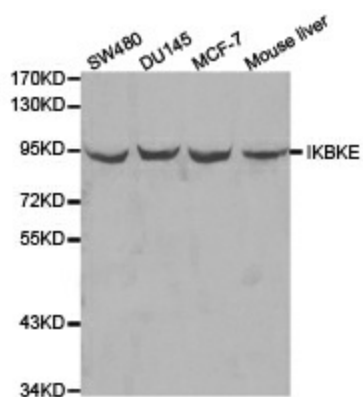
<b>Product Type:</b>	Primary Antibodies
<b>Applications:</b>	ICC/IF, IHC, WB
<b>Recommended Dilution:</b>	WB 1:500 - 1:2000
<b>Reactivity:</b>	Human, Mouse, Rat
<b>Host:</b>	Rabbit
<b>Isotype:</b>	IgG
<b>Clonality:</b>	Polyclonal
<b>Immunogen:</b>	Recombinant protein of human IKBKE
<b>Formulation:</b>	Store at -20C or -80C. Avoid freeze / thaw cycles. Buffer: PBS with 0.02% sodium azide, 50% glycerol, pH7.3
<b>Concentration:</b>	lot specific
<b>Purification:</b>	Affinity purification
<b>Conjugation:</b>	Unconjugated
<b>Storage:</b>	Store at -20°C as received.
<b>Stability:</b>	Stable for 12 months from date of receipt.
<b>Gene Name:</b>	inhibitor of kappa light polypeptide gene enhancer in B-cells, kinase epsilon
<b>Database Link:</b>	<a href="#">NP_054721</a> <a href="#">Entrez Gene 56489 Mouse</a> <a href="#">Entrez Gene 363984 Rat</a> <a href="#">Entrez Gene 9641 Human</a> <a href="#">Q14164</a>
<b>Background:</b>	IKK epsilon is a noncanonical I-kappa-B kinase (IKK) that is essential for regulating antiviral signaling pathways. It has also been identified as a breast cancer oncogene and is amplified and overexpressed in over 30% of breast carcinomas and breast cancer cell lines. IKK epsilon phosphorylates inhibitors of NF-kappa-B thus leading to the dissociation of the inhibitor/NF-kappa-B complex and ultimately the degradation of the inhibitor. It plays a special role in the immune response. IKK epsilon protects cells against DNA damage-induced cell death.
<b>Synonyms:</b>	IKK-E; IKK-i; IKKE; IKKI
<b>Protein Families:</b>	Druggable Genome, Protein Kinase



[View online »](#)

**Protein Pathways:** Cytosolic DNA-sensing pathway, RIG-I-like receptor signaling pathway, Toll-like receptor signaling pathway

**Product images:**



Western blot analysis of extracts of various cell lines, using IKBKE antibody.