

Product datasheet for **TA326782**

Cytochrome C (CYCS) Rabbit Polyclonal Antibody

Product data:

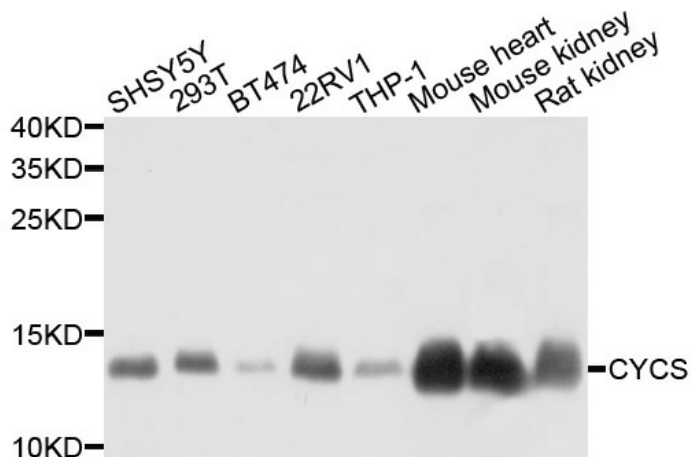
Product Type:	Primary Antibodies
Applications:	IF, IHC, WB
Recommended Dilution:	WB 1:500 - 1:1000;IHC 1:50 - 1:200
Reactivity:	Human, Mouse, Rat
Host:	Rabbit
Isotype:	IgG
Clonality:	Polyclonal
Immunogen:	Recombinant protein of human CYCS
Formulation:	Store at -20C or -80C. Avoid freeze / thaw cycles. Buffer: PBS with 0.02% sodium azide, 50% glycerol, pH7.3
Concentration:	lot specific
Purification:	Affinity purification
Conjugation:	Unconjugated
Storage:	Store at -20°C as received.
Stability:	Stable for 12 months from date of receipt.
Predicted Protein Size:	12 kDa
Gene Name:	cytochrome c, somatic
Database Link:	NP_061820 Entrez Gene 13063 MouseEntrez Gene 25309 RatEntrez Gene 54205 Human P99999
Background:	Cytochrome c is a well conserved electron-transport protein and is part of the respiratory chain localized to mitochondrial intermembrane space. Upon apoptotic stimulation, cytochrome c released from mitochondria associates with procaspase-9 (47 kDa)/Apaf 1. This complex processes caspase-9 from inactive proenzyme to its active form. This event further triggers caspase-3 activation and eventually leads to apoptosis.
Synonyms:	CYC; HCS; THC4
Protein Families:	Druggable Genome



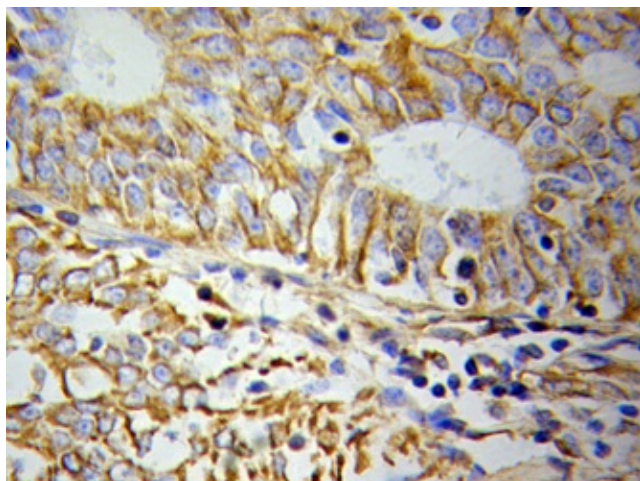
[View online »](#)

Protein Pathways: Alzheimer's disease, Amyotrophic lateral sclerosis (ALS), Apoptosis, Colorectal cancer, Huntington's disease, p53 signaling pathway, Parkinson's disease, Pathways in cancer, Small cell lung cancer, Viral myocarditis

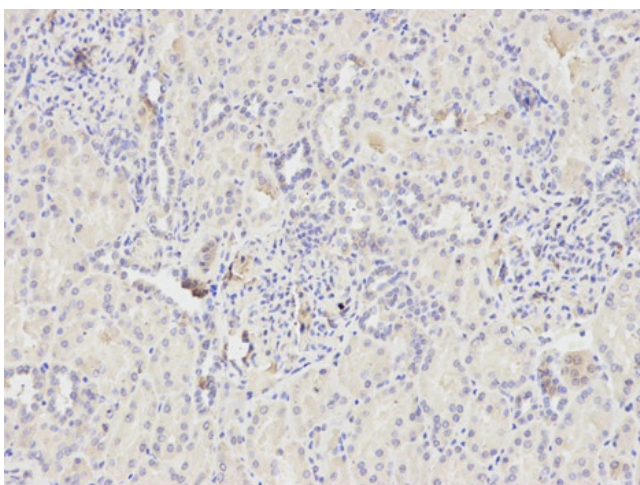
Product images:



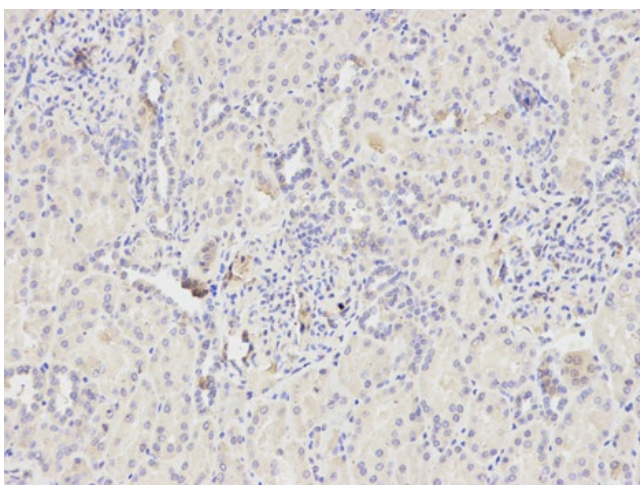
Western blot analysis of extracts of various cells, using CYCS antibody.



Immunohistochemistry of paraffin-embedded Colon cancer using CYCS Antibody.



Immunohistochemistry of paraffin-embedded human thyroid cancer using CYCS antibody at dilution of 1:200 (200x lens).



Immunohistochemistry of paraffin-embedded human kidney using CYCS antibody at dilution of 1:200 (200x lens).