

Product datasheet for **TA326777S**

CD133 (PROM1) Rabbit Polyclonal Antibody

Product data:

Product Type:	Primary Antibodies
Applications:	ICC/IF, IHC, IP, WB
Recommended Dilution:	WB 1:500 - 1:2000;IF 1:50 - 1:100
Reactivity:	Human, Mouse, Rat
Host:	Rabbit
Isotype:	IgG
Clonality:	Polyclonal
Immunogen:	C term -peptide of human CD133
Formulation:	Store at -20C or -80C. Avoid freeze / thaw cycles. Buffer: PBS with 0.02% sodium azide, 50% glycerol, pH7.3
Concentration:	lot specific
Purification:	Affinity purification
Conjugation:	Unconjugated
Storage:	Store at -20°C as received.
Stability:	Stable for 12 months from date of receipt.
Predicted Protein Size:	97 kDa
Gene Name:	prominin 1
Database Link:	NP_006008 Entrez Gene 19126 MouseEntrez Gene 60357 RatEntrez Gene 8842 Human O43490

Background: This gene encodes a pentaspan transmembrane glycoprotein. The protein localizes to membrane protrusions and is often expressed on adult stem cells, where it is thought to function in maintaining stem cell properties by suppressing differentiation. Mutations in this gene have been shown to result in retinitis pigmentosa and Stargardt disease. Expression of this gene is also associated with several types of cancer. This gene is expressed from at least five alternative promoters that are expressed in a tissue-dependent manner. Multiple transcript variants encoding different isoforms have been found for this gene. [provided by RefSeq, Mar 2009]

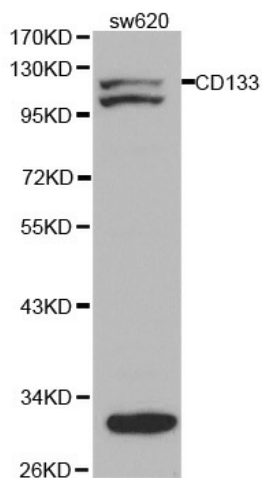


[View online »](#)

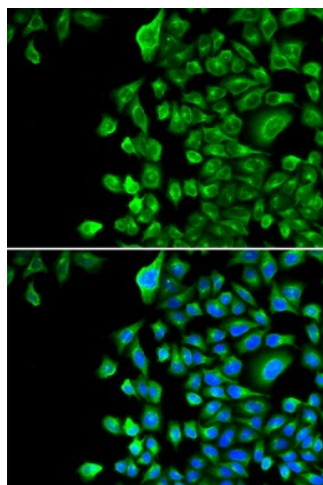
Synonyms: AC133; CD133; CORD12; MCDR2; MSTP061; PROML1; RP41; STGD4

Protein Families: Druggable Genome, ES Cell Differentiation/IPS, Transmembrane

Product images:



Western blot analysis of extracts of SW620 cells, using PROM1 antibody.



Immunofluorescence analysis of U2OS cell using PROM1 antibody. Blue: DAPI for nuclear staining.