

Product datasheet for **TA326776**

Caspase 3 (CASP3) Rabbit Polyclonal Antibody

Product data:

Product Type:	Primary Antibodies
Applications:	ICC/IF, WB
Recommended Dilution:	WB 1:500 - 1:2000;IF 1:50 - 1:200
Reactivity:	Human, Mouse, Rat
Host:	Rabbit
Isotype:	IgG
Clonality:	Polyclonal
Immunogen:	Recombinant protein of human CASP3
Formulation:	Store at -20C or -80C. Avoid freeze / thaw cycles. Buffer: PBS with 0.02% sodium azide, 50% glycerol, pH7.3
Concentration:	lot specific
Purification:	Affinity purification
Conjugation:	Unconjugated
Storage:	Store at -20°C as received.
Stability:	Stable for 12 months from date of receipt.
Predicted Protein Size:	32 kDa
Gene Name:	caspase 3
Database Link:	NP_004337 Entrez Gene 12367 MouseEntrez Gene 25402 RatEntrez Gene 836 Human P42574
Background:	Caspase-3 (CPP-32, Apoptain, Yama, SCA-1) is a critical executioner of apoptosis, as it is either partially or totally responsible for the proteolytic cleavage of many key proteins such as the nuclear enzyme poly(ADP-ribose) polymerase (PARP). Activation of caspase-3 requires proteolytic processing of its inactive zymogen into activated p17 and p12 fragments. Cleavage of caspase-3 requires aspartic acid at the P1 position.
Synonyms:	CPP32; CPP32B; SCA-1
Protein Families:	Druggable Genome, ES Cell Differentiation/IPS, Protease

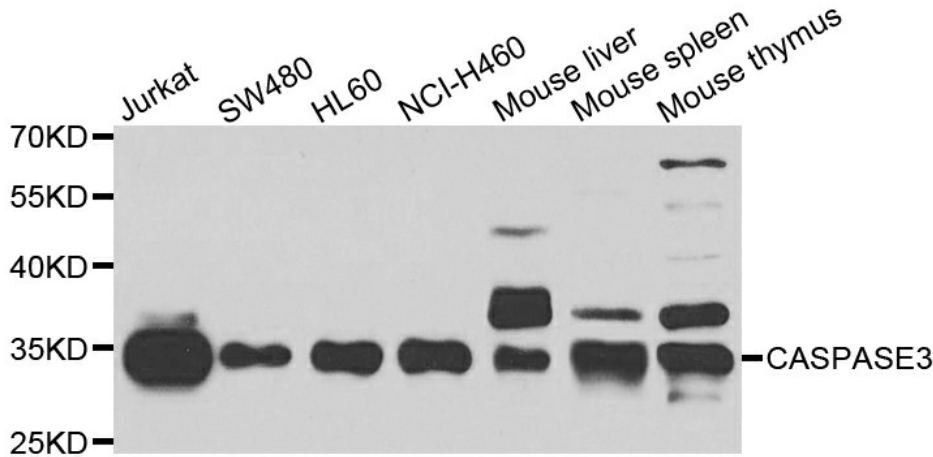


[View online »](#)

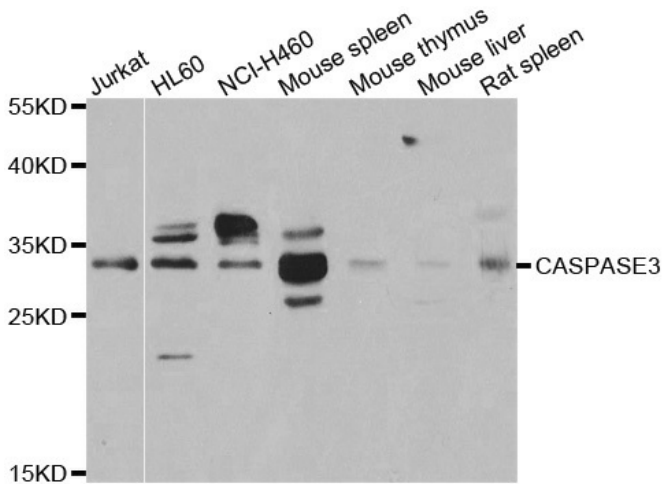
Protein Pathways:

Alzheimer's disease, Amyotrophic lateral sclerosis (ALS), Apoptosis, Colorectal cancer, Epithelial cell signaling in Helicobacter pylori infection, Huntington's disease, MAPK signaling pathway, Natural killer cell mediated cytotoxicity, p53 signaling pathway, Parkinson's disease, Pathways in cancer, Viral myocarditis

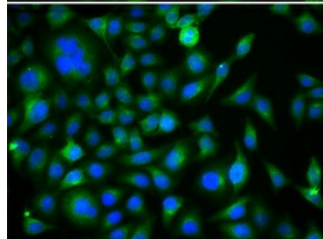
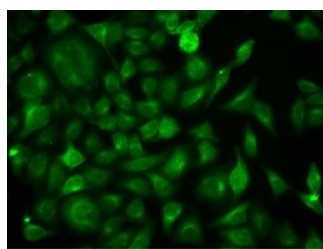
Product images:



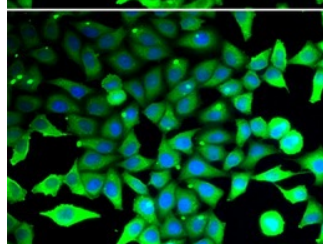
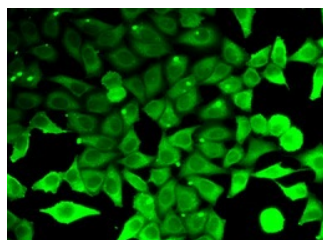
Western blot analysis of extracts of various cell lines using CASP3 antibody.



Western blot analysis of extracts of various cell lines using CASP3 antibody.



Immunofluorescence analysis of U2OS cell using CASP3 antibody. Blue: DAPI for nuclear staining.



Immunofluorescence analysis of HeLa cell using CASP3 antibody. Blue: DAPI for nuclear staining.