

## Product datasheet for **TA326775**

### BVES Rabbit Polyclonal Antibody

#### Product data:

Product Type:	Primary Antibodies
Applications:	WB
Recommended Dilution:	WB: 1:500-1:2000
Reactivity:	Human
Host:	Rabbit
Isotype:	IgG
Clonality:	Polyclonal
Immunogen:	Recombinant Protein of human BVES
Formulation:	PBS with 0.09% Sodium azide,50% glycerol,pH7.3.
Concentration:	lot specific
Purification:	Affinity purification
Conjugation:	Unconjugated
Storage:	Store at -20°C as received.
Stability:	Stable for 12 months from date of receipt.
Gene Name:	blood vessel epicardial substance
Database Link:	<a href="#">NP_009004</a> <a href="#">Entrez Gene 11149 Human</a> <a href="#">Q8NE79</a>

**Background:** This gene encodes a member of the POP family of proteins containing three putative transmembrane domains. This gene is expressed in cardiac and skeletal muscle and may play an important role in development of these tissues. The mouse ortholog may be involved in the regeneration of adult skeletal muscle and may act as a cell adhesion molecule in coronary vasculogenesis. Three transcript variants encoding the same protein have been found for this gene. [provided by RefSeq, Dec 2010]

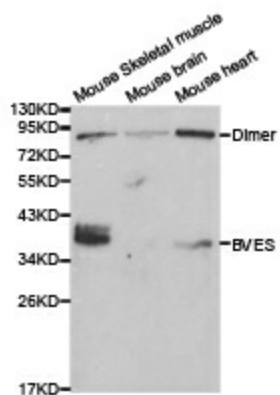
**Synonyms:** HBVES; LGMD2X; POP1; POPDC1

**Protein Families:** Transmembrane



[View online »](#)

## Product images:



Western blot analysis of extracts of various cell lines, using BVES antibody.