

Product datasheet for **TA326772S**

BID Rabbit Polyclonal Antibody

Product data:

Product Type:	Primary Antibodies
Applications:	ELISA, ICC/IF, WB
Recommended Dilution:	WB, 1:500 - 1:1000 IF/ICC, 1:50 - 1:200 ELISA, Recommended starting concentration is 1 µg/mL. Please optimize the concentration based on your specific assay requirements.
Reactivity:	Human, Mouse, Rat
Host:	Rabbit
Isotype:	IgG
Clonality:	Polyclonal
Formulation:	Store at -20C or -80C. Avoid freeze / thaw cycles. Buffer: PBS with 0.02% sodium azide, 50% glycerol, pH7.3
Concentration:	lot specific
Purification:	Affinity purification
Conjugation:	Unconjugated
Storage:	Store at -20°C. Avoid freeze / thaw cycles.
Stability:	Stable for 12 months from date of receipt.
Predicted Protein Size:	22kDa
Gene Name:	BH3 interacting domain death agonist
Database Link:	NP_001187 Entrez Gene 12122 Mouse Entrez Gene 64625 Rat Entrez Gene 637 Human P55957
Background:	This gene encodes a death agonist that heterodimerizes with either agonist BAX or antagonist BCL2, and thus regulate apoptosis. The encoded protein is a member of the BCL-2 family of cell death regulators. It is a mediator of mitochondrial damage induced by caspase-8 (CASP8); CASP8 cleaves this encoded protein, and the COOH-terminal part translocates to mitochondria where it triggers cytochrome c release. Multiple alternatively spliced transcript variants have been found.



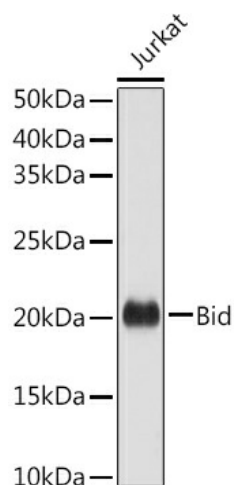
[View online »](#)

Synonyms: FP497

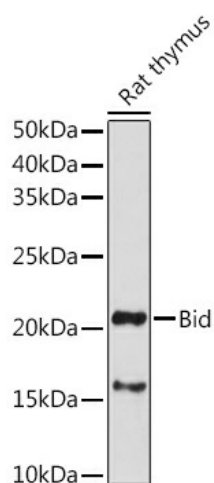
Protein Families: Druggable Genome

Protein Pathways: Alzheimer's disease, Amyotrophic lateral sclerosis (ALS), Apoptosis, Natural killer cell mediated cytotoxicity, p53 signaling pathway, Pathways in cancer, Viral myocarditis

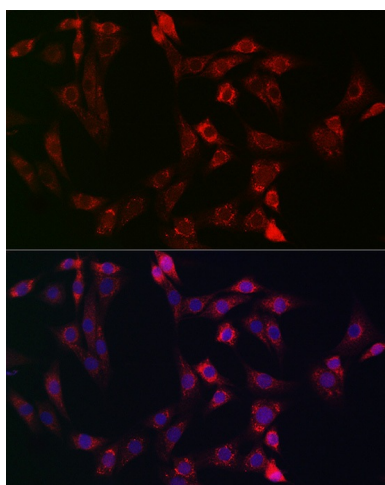
Product images:



Western blot analysis of lysates from Jurkat cells



Western blot analysis of lysates from Rat thymus



Immunofluorescence analysis of NIH-3T3 cells using Bid Rabbit pAb ([TA326772]) at dilution of 1:100 (40x lens). Secondary antibody: Cy3-conjugated Goat anti-Rabbit IgG (H+L) (AS007) at 1:500 dilution. Blue: DAPI for nuclear staining.