

## Product datasheet for **TA326770**

### **BAX Rabbit Polyclonal Antibody**

#### **Product data:**

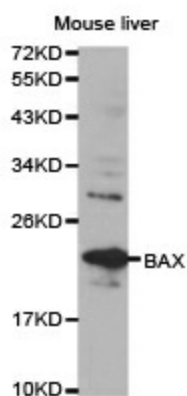
Product Type:	Primary Antibodies
Applications:	ICC/IF, IHC, IP, WB
Recommended Dilution:	WB 1:500 - 1:2000
Reactivity:	Human, Mouse, Rat
Host:	Rabbit
Isotype:	IgG
Clonality:	Polyclonal
Immunogen:	Recombinant protein of human Bax
Formulation:	Store at -20C or -80C. Avoid freeze / thaw cycles. Buffer: PBS with 0.02% sodium azide, 50% glycerol, pH7.3
Concentration:	lot specific
Purification:	Affinity purification
Conjugation:	Unconjugated
Storage:	Store at -20°C as received.
Stability:	Stable for 12 months from date of receipt.
Gene Name:	BCL2 associated X protein
Database Link:	<a href="#">NP_620116</a> <a href="#">Entrez Gene 12028 Mouse</a> <a href="#">Entrez Gene 24887 Rat</a> <a href="#">Entrez Gene 581 Human</a> <a href="#">Q07812</a>
Background:	Bax is a key component for cellular induced apoptosis through mitochondrial stress. Upon apoptotic stimulation, Bax forms oligomers and translocates from the cytosol to the mitochondrial membrane. Through interactions with pore proteins on the mitochondrial membrane, Bax increases the membrane's permeability, which leads to the release of cytochrome c from mitochondria, activation of caspase-9 and initiation of the caspase activation pathway for apoptosis.
Synonyms:	BCL2L4
Protein Families:	Druggable Genome, Transmembrane



[View online »](#)

**Protein Pathways:** Amyotrophic lateral sclerosis (ALS), Apoptosis, Colorectal cancer, Huntington's disease, Neurotrophin signaling pathway, p53 signaling pathway, Pathways in cancer, Prion diseases

**Product images:**



Western blot analysis of extracts of mouse liver cell line, using BAX antibody.