

Product datasheet for **TA326768**

Bak (BAK1) Rabbit Polyclonal Antibody

Product data:

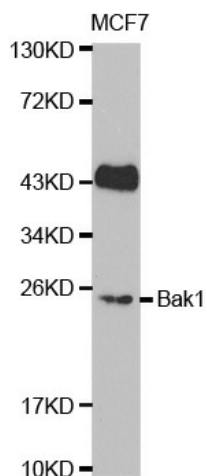
Product Type:	Primary Antibodies
Applications:	ICC/IF, IP, WB
Recommended Dilution:	WB 1:500 - 1:2000;IF 1:50 - 1:200
Reactivity:	Human, Mouse, Rat
Host:	Rabbit
Isotype:	IgG
Clonality:	Polyclonal
Immunogen:	N term -peptide of human BAK1
Formulation:	Store at -20C or -80C. Avoid freeze / thaw cycles. Buffer: PBS with 0.02% sodium azide, 50% glycerol, pH7.3
Concentration:	lot specific
Purification:	Affinity purification
Conjugation:	Unconjugated
Storage:	Store at -20°C as received.
Stability:	Stable for 12 months from date of receipt.
Predicted Protein Size:	23 kDa
Gene Name:	BCL2 antagonist/killer 1
Database Link:	NP_001179 Entrez Gene 12018 Mouse Entrez Gene 116502 Rat Entrez Gene 578 Human Q16611
Background:	Bak is a proapoptotic member of the Bcl-2 family. This protein is located on the outer membrane of mitochondria and is an essential component for transduction of apoptotic signals through the mitochondrial pathway. Upon apoptotic stimulation, an upstream stimulator like truncated BID (tBID) induces conformational changes in Bak to form oligomer channels in the mitochondrial membrane for cytochrome c release. The release of cytochrome c to the cytosol activates the caspase-9 pathway and eventually leads to cell death.
Synonyms:	BAK; BAK-LIKE; BCL2L7; CDN1



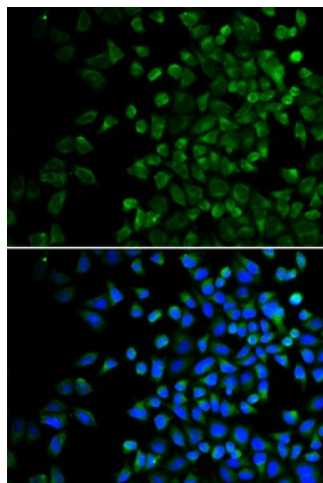
[View online »](#)

Protein Families: Druggable Genome, Stem cell - Pluripotency, Transmembrane

Product images:



Western blot analysis of extracts of MCF7 cell lines, using BAK1 antibody.



Immunofluorescence analysis of HeLa cell using Bak1 antibody. Blue: DAPI for nuclear staining.