

Product datasheet for **TA326765**

alpha 1 Fetoprotein (AFP) Rabbit Polyclonal Antibody

Product data:

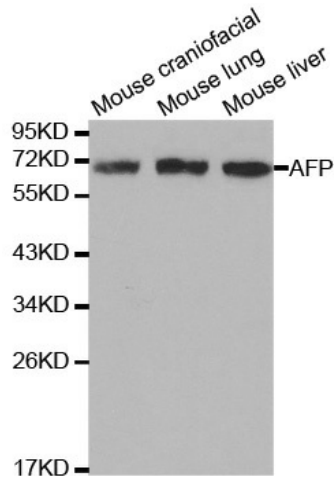
Product Type:	Primary Antibodies
Applications:	WB
Recommended Dilution:	WB 1:500 - 1:2000
Reactivity:	Mouse, Human, Rat
Host:	Rabbit
Isotype:	IgG
Clonality:	Polyclonal
Immunogen:	C term -peptide of human AFP
Formulation:	Store at -20C or -80C. Avoid freeze / thaw cycles. Buffer: PBS with 0.02% sodium azide, 50% glycerol, pH7.3
Concentration:	lot specific
Purification:	Affinity purification
Conjugation:	Unconjugated
Storage:	Store at -20°C as received.
Stability:	Stable for 12 months from date of receipt.
Predicted Protein Size:	65 kDa
Gene Name:	alpha fetoprotein
Database Link:	NP_001125 Entrez Gene 11576 MouseEntrez Gene 24177 RatEntrez Gene 174 Human P02771
Background:	Alpha-fetoprotein (AFP) is a 65 kDa glycoprotein found in the serum of the mammalian fetal liver, yolk sac, and GI tract. While AFP expression in adult cells is low, it is aberrantly expressed in adult liver cancer cells. The tumor suppressor gene p53 and β -catenin are both involved in the regulation of AFP expression. In normal adult cells, p53 binds to the repressor region of the AFP gene, thereby blocking transcription. Mutations in both p53 and β -catenin are associated with aberrant expression of AFP. Elevated serum levels are predictive of hepatocellular carcinoma.
Synonyms:	AFPD; FETA; HPAFP



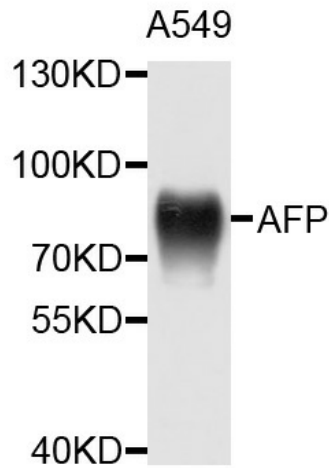
[View online »](#)

Protein Families: Druggable Genome, Secreted Protein

Product images:



Western blot analysis of extracts of various cells, using AFP antibody.



Western blot analysis of extracts of A549 cells, using AFP antibody.