

Product datasheet for **TA326763**

Ubiquitin (UBB) Rabbit Polyclonal Antibody

Product data:

Product Type:	Primary Antibodies
Applications:	WB
Recommended Dilution:	WB: 1:1000-1:2000
Reactivity:	Human, Mouse, Rat
Host:	Rabbit
Isotype:	IgG
Clonality:	Polyclonal
Immunogen:	A synthetic peptide of human Ubiquitin B
Formulation:	Store at -20C or -80C. Avoid freeze / thaw cycles. Buffer: PBS with 0.02% sodium azide, 50% glycerol, pH7.3
Concentration:	lot specific
Purification:	Affinity purification
Conjugation:	Unconjugated
Storage:	Store at -20°C as received.
Stability:	Stable for 12 months from date of receipt.
Gene Name:	ubiquitin B
Database Link:	NP_061828 Entrez Gene 22187 Mouse Entrez Gene 192255 Rat Entrez Gene 7314 Human POCG47

Background: Ubiquitin can be covalently linked to many cellular proteins by the ubiquitination process, which targets proteins for degradation by the 26S proteasome. Three components are involved in the target protein-ubiquitin conjugation process. Ubiquitin is first activated by forming a thiolester complex with the ubiquitin-activating enzyme (UBE1 or E1). The activated ubiquitin is subsequently transferred to the ubiquitin-carrier protein E2, and then from E2 to ubiquitin ligase E3 for final delivery to the e-amino group of the target protein lysine residue. Combinatorial interactions of different E2 and E3 proteins result in substrate specificity. UBE1 has two isoforms: UBE1a is a nuclear protein of 117 kDa while UBE1b is a nuclear and cytoplasmic protein of 110 kDa.



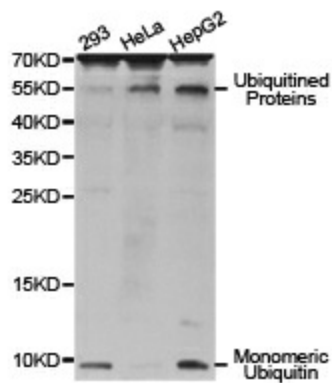
[View online »](#)

Synonyms: HEL-S-50

Protein Families: Druggable Genome

Protein Pathways: Parkinson's disease

Product images:



Western blot analysis of extracts of various cell lines, using Ubiquitin B antibody.