

Product datasheet for **TA326762**

SPHK1 Rabbit Polyclonal Antibody

Product data:

Product Type:	Primary Antibodies
Applications:	WB
Recommended Dilution:	WB 1:500 - 1:2000
Reactivity:	Human, Mouse
Host:	Rabbit
Isotype:	IgG
Clonality:	Polyclonal
Immunogen:	Recombinant protein of human SPHK1
Formulation:	Store at -20C or -80C. Avoid freeze / thaw cycles. Buffer: PBS with 0.02% sodium azide, 50% glycerol, pH7.3
Concentration:	lot specific
Purification:	Affinity purification
Conjugation:	Unconjugated
Storage:	Store at -20°C as received.
Stability:	Stable for 12 months from date of receipt.
Gene Name:	sphingosine kinase 1
Database Link:	NP_068807 Entrez Gene 20698 Mouse Entrez Gene 8877 Human Q9NYA1

Background: Sphingosine kinases (SPHKs) catalyze the phosphorylation of sphingosine to form sphingosine-1-phosphate (S1P), a lipid mediator with both intra- and extracellular functions. Together with other sphingolipid metabolizing enzymes, SPHKs regulate the balance of the lipid mediators, ceramide, sphingosine, and S1P. Two distinct SPHK isoforms, SPHK1 and SPHK2, have been cloned and characterized. SPHK1 and SPHK2 are highly conserved and diversely expressed. The SPHKs are activated by G-protein-coupled receptors, receptor tyrosine kinases, immunoglobulin receptors, cytokines, and other stimuli. The molecular mechanisms by which SPHK1 and SPHK2 are specifically regulated are complex and only partially understood.



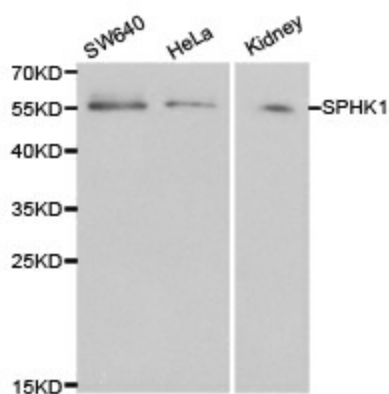
[View online »](#)

Synonyms: SPHK

Protein Families: Druggable Genome

Protein Pathways: Calcium signaling pathway, Fc gamma R-mediated phagocytosis, Metabolic pathways, Sphingolipid metabolism, VEGF signaling pathway

Product images:



Western blot analysis of extracts of various cell lines, using SPHK1 antibody.