

Product datasheet for **TA326758**

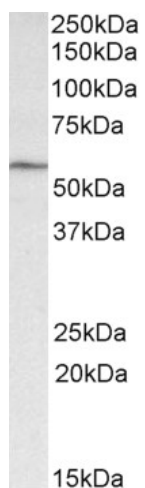
Glp1r Goat Polyclonal Antibody

Product data:

Product Type:	Primary Antibodies
Applications:	E, IHC, WB
Recommended Dilution:	WB: 1-3µg/ml. Approx 55kDa band observed in Mouse Heart lysates. Primary Ab incubation was 1 hour. IHC: recommended concentration: 5µg/ml. Tested on paraffin embedded Human Pancreas. Peptide ELISA: antibody detection limit dilution 1:128.000.
Reactivity:	Mouse, Human
Host:	Goat
Isotype:	IgG
Clonality:	Polyclonal
Immunogen:	Peptide with sequence C-SKRGERNFP EEQ, from the internal region of the protein sequence according to NP_067307.2.
Formulation:	Supplied at 0.5 mg/ml in Tris saline, 0.02% sodium azide, pH7.3 with 0.5% bovine serum albumin. Aliquot and store at -20°C. Minimize freezing and thawing.
Concentration:	0.5 mg/ml
Purification:	Purified from goat serum by ammonium sulphate precipitation followed by antigen affinity chromatography using the immunizing peptide.
Conjugation:	Unconjugated
Storage:	Store at -20°C as received.
Stability:	Stable for 12 months from date of receipt.
Gene Name:	glucagon-like peptide 1 receptor
Database Link:	NP_067307 Entrez Gene 2740 Human Entrez Gene 14652 Mouse O35659
Synonyms:	GLP-1-R; GLP-1R; MGC138331
Note:	The immunizing peptide represents part of an extracellular region.



[View online »](#)

Product images:

TA326758 (1ug/ml) staining of Mouse Heart lysate (35ug protein in RIPA buffer). Primary incubation was 1 hour. Detected by chemiluminescence.