

Product datasheet for **TA326755**

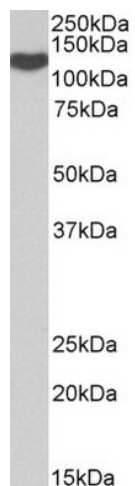
ADAM19 Goat Polyclonal Antibody

Product data:

Product Type:	Primary Antibodies
Applications:	IHC, WB
Recommended Dilution:	ELISA:1:128000.WB:0.1-0.3µg/ml.IHC:5µg/ml
Reactivity:	Human (Expected from sequence similarity: Dog, Pig, Cow)
Host:	Goat
Isotype:	IgG
Clonality:	Polyclonal
Immunogen:	Peptide with sequence KIQCQSSEARPLESN, from the internal region of the protein sequence according to NP_150377.1.
Formulation:	Supplied at 0.5 mg/ml in Tris saline, 0.02% sodium azide, pH7.3 with 0.5% bovine serum albumin. Aliquot and store at -20°C. Minimize freezing and thawing.
Concentration:	lot specific
Purification:	Purified from goat serum by ammonium sulphate precipitation followed by antigen affinity chromatography using the immunizing peptide.
Conjugation:	Unconjugated
Storage:	Store at -20°C as received.
Stability:	Stable for 12 months from date of receipt.
Gene Name:	ADAM metallopeptidase domain 19
Database Link:	NP_150377 Entrez Gene 489156 Dog Entrez Gene 8728 Human Q9H013
Synonyms:	FKSG34; MADDAM; MLTNB
Note:	Approx 125kDa band observed in Human Spleen lysates (calculated MW of 101kDa according to NP_150377.1). The observed molecular weight corresponds to the glycosylated form. Recommended concentration: 0.1-0.3µg/ml.
Protein Families:	Druggable Genome, Transmembrane



[View online »](#)

Product images:

TA326755 (0.1ug/ml) staining of Spleen lysate (35ug protein in RIPA buffer). Primary incubation was 1 hour. Detected by chemiluminescence.