

Product datasheet for **TA326750**

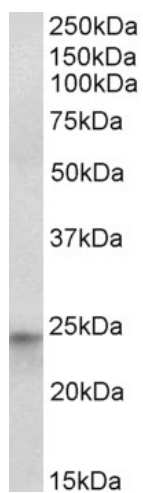
HES4 Goat Polyclonal Antibody

Product data:

Product Type:	Primary Antibodies
Applications:	WB
Recommended Dilution:	ELISA: 1:128000; WB: 1-3µg/ml
Reactivity:	Human
Host:	Goat
Isotype:	IgG
Clonality:	Polyclonal
Immunogen:	Peptide with sequence C-RSAAEHRKVGSRP, from the internal region of the protein sequence according to NP_001135939.1.
Formulation:	Supplied at 0.5 mg/ml in Tris saline, 0.02% sodium azide, pH7.3 with 0.5% bovine serum albumin. Aliquot and store at -20°C. Minimize freezing and thawing.
Concentration:	lot specific
Purification:	Purified from goat serum by ammonium sulphate precipitation followed by antigen affinity chromatography using the immunizing peptide.
Conjugation:	Unconjugated
Storage:	Store at -20°C as received.
Stability:	Stable for 12 months from date of receipt.
Gene Name:	hes family bHLH transcription factor 4
Database Link:	NP_066993 Entrez Gene 57801 Human Q9HCC6
Synonyms:	bHLHb42
Note:	Approx 24kDa band observed in nuclear lysates of cell line HepG2 (calculated MW of 26.1kDa according to NP_001135939.1). Recommended concentration: 1-3µg/ml. This antibody is expected to recognize isoform 1 (NP_001135939.1) only.
Protein Families:	Druggable Genome, Transcription Factors



[View online »](#)

Product images:

TA326750 (1ug/ml) staining of HepG2 nuclear lysate (35ug protein in RIPA buffer). Primary incubation was 1 hour. Detected by chemiluminescence.