

Product datasheet for **TA326749**

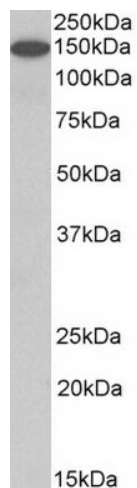
Contactin 1 (CNTN1) Goat Polyclonal Antibody

Product data:

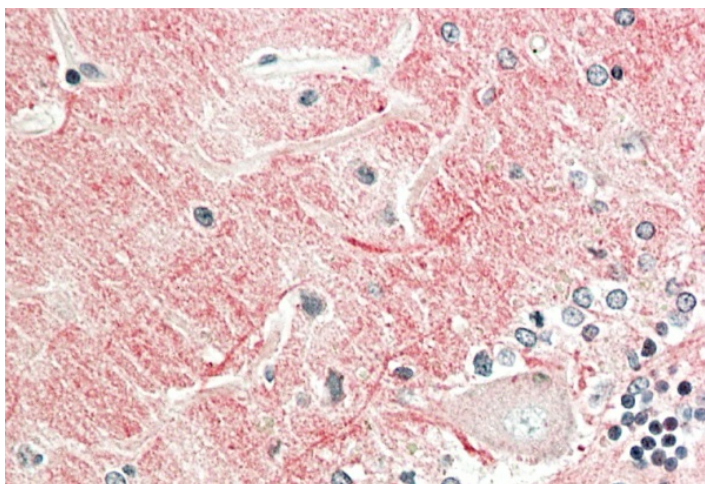
Product Type:	Primary Antibodies
Applications:	IHC, WB
Recommended Dilution:	ELISA: 1:16000; WB: 1-3ug/mL; IHC: 5-10ug/mL
Reactivity:	Human, Mouse, Rat (Expected from sequence similarity: Dog, Pig)
Host:	Goat
Isotype:	IgG
Clonality:	Polyclonal
Immunogen:	Peptide with sequence C-QVTSQEYSARLEN, from the internal region of the protein sequence according to NP_001834.2; NP_778203.1.
Formulation:	Supplied at 0.5 mg/ml in Tris saline, 0.02% sodium azide, pH7.3 with 0.5% bovine serum albumin. Aliquot and store at -20°C. Minimize freezing and thawing.
Concentration:	lot specific
Purification:	Purified from goat serum by ammonium sulphate precipitation followed by antigen affinity chromatography using the immunizing peptide.
Conjugation:	Unconjugated
Storage:	Store at -20°C as received.
Stability:	Stable for 12 months from date of receipt.
Gene Name:	contactin 1
Database Link:	NP_778203 Entrez Gene 12805 MouseEntrez Gene 117258 RatEntrez Gene 477641 DogEntrez Gene 1272 Human Q12860
Synonyms:	F3; GP135; MYPCN
Note:	Approx 150kDa band observed in Human, Mouse and Rat Brain lysates (calculated MW of 113kDa according to NP_001834.2). The observed molecular weight corresponds to the glycosylated form. Recommended concentration: 1-3µg/ml. This antibody is expected to recognize isoform 1 (NP_001834.2) and isoform 2 (NP_778203.1).
Protein Pathways:	Cell adhesion molecules (CAMs)



[View online »](#)

Product images:

TA326749 (1ug/ml) staining of Human Cerebellum lysate (35ug protein in RIPA buffer). Primary incubation was 1 hour. Detected by chemiluminescence.



TA326749 (5ug/ml) staining of paraffin embedded Human Cerebellum. Steamed antigen retrieval with citrate buffer pH 6, AP-staining.