

## Product datasheet for **TA326743**

### alpha 1 Antichymotrypsin (SERPINA3) Goat Polyclonal Antibody

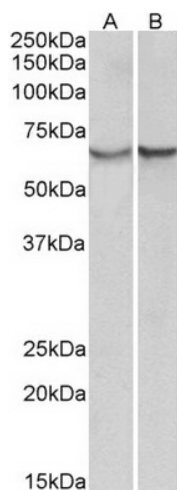
#### Product data:

Product Type:	Primary Antibodies
Applications:	WB
Recommended Dilution:	ELISA: 1:128000; WB: 0.3-1µg/ml
Reactivity:	Human
Host:	Goat
Isotype:	IgG
Clonality:	Polyclonal
Immunogen:	Peptide with sequence C-DPQDTHQSRFYLSKK, from the internal region of the protein sequence according to NP_001076.2.
Formulation:	Supplied at 0.5 mg/ml in Tris saline, 0.02% sodium azide, pH7.3 with 0.5% bovine serum albumin. Aliquot and store at -20°C. Minimize freezing and thawing.
Concentration:	lot specific
Purification:	Purified from goat serum by ammonium sulphate precipitation followed by antigen affinity chromatography using the immunizing peptide.
Conjugation:	Unconjugated
Storage:	Store at -20°C as received.
Stability:	Stable for 12 months from date of receipt.
Gene Name:	serpin family A member 3
Database Link:	<a href="#">NP_001076</a> <a href="#">Entrez Gene 12 Human P01011</a>
Synonyms:	AACT; ACT; GIG24; GIG25
Note:	Approx 65kDa band observed in Human Albumin-depleted Serum and Plasma lysates (calculated MW of 47.7kDa according to NP_001076.2). The observed molecular weight corresponds to the glycosylated form. Recommended concentration: 0.3-1µg/ml.
Protein Families:	Druggable Genome, Secreted Protein



[View online »](#)

## Product images:



TA326743 (0.3ug/ml) staining of albumin-depleted Serum (A) and Plasma (B) lysates (35ug protein in RIPA buffer). Primary incubation was 1 hour. Detected by chemiluminescence.