

## Product datasheet for **TA326742**

### Complement C9 (C9) Goat Polyclonal Antibody

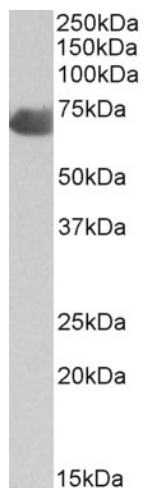
#### Product data:

Product Type:	Primary Antibodies
Applications:	WB
Recommended Dilution:	ELISA: 1:4000; WB: 1-3µg/ml
Reactivity:	Human
Host:	Goat
Isotype:	IgG
Clonality:	Polyclonal
Immunogen:	Peptide with sequence C-ETKGEKNFRTEH, from the internal region of the protein sequence according to NP_001728.1.
Formulation:	Supplied at 0.5 mg/ml in Tris saline, 0.02% sodium azide, pH7.3 with 0.5% bovine serum albumin. Aliquot and store at -20°C. Minimize freezing and thawing.
Concentration:	lot specific
Purification:	Purified from goat serum by ammonium sulphate precipitation followed by antigen affinity chromatography using the immunizing peptide.
Conjugation:	Unconjugated
Storage:	Store at -20°C as received.
Stability:	Stable for 12 months from date of receipt.
Gene Name:	complement component 9
Database Link:	<a href="#">NP_001728</a> <a href="#">Entrez Gene 735 Human</a> <a href="#">P02748</a>
Synonyms:	ARMD15; C9D
Note:	Approx 70kDa band observed in Human Placenta, Kidney and Liver lysates (calculated MW of 63.2kDa according to NP_001728.1). The observed molecular weight corresponds to the glycosylated form. Recommended concentration: 1-3µg/ml.
Protein Families:	Druggable Genome
Protein Pathways:	Complement and coagulation cascades, Prion diseases, Systemic lupus erythematosus



[View online »](#)

## Product images:



TA326742 (2ug/ml) staining of Human Placenta lysate (35ug protein in RIPA buffer). Primary incubation was 1 hour. Detected by chemiluminescence.