

Product datasheet for **TA326741**

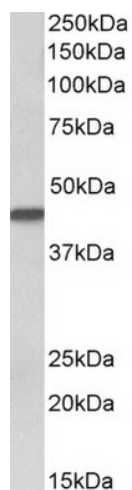
Cytokeratin 19 (KRT19) Goat Polyclonal Antibody

Product data:

Product Type:	Primary Antibodies
Applications:	WB
Recommended Dilution:	ELISA: 1:64000; WB: 0.03-0.1µg/ml
Reactivity:	Human
Host:	Goat
Isotype:	IgG
Clonality:	Polyclonal
Immunogen:	Peptide with sequence C-EGQEDHYNNLSASK, from the C Terminus of the protein sequence according to NP_002267.2.
Formulation:	Supplied at 0.5 mg/ml in Tris saline, 0.02% sodium azide, pH7.3 with 0.5% bovine serum albumin. Aliquot and store at -20°C. Minimize freezing and thawing.
Concentration:	lot specific
Purification:	Purified from goat serum by ammonium sulphate precipitation followed by antigen affinity chromatography using the immunizing peptide.
Conjugation:	Unconjugated
Storage:	Store at -20°C as received.
Stability:	Stable for 12 months from date of receipt.
Gene Name:	keratin 19
Database Link:	NP_002267 Entrez Gene 3880 Human P08727
Synonyms:	CK19; K1CS; K19
Note:	Approx 43kDa band observed in Human cancer lysates of Breast, Pancreas and Colon (calculated MW of 44.1kDa according to NP_002267.2). Recommended concentration: 0.03-0.1µg/ml.



[View online »](#)

Product images:

TA326741 (0.1ug/ml) staining of Human Breast cancer lysate (35ug protein in RIPA buffer). Primary incubation was 1 hour. Detected by chemiluminescence.