

Product datasheet for **TA326739**

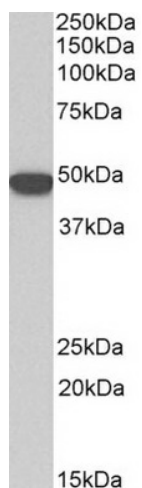
Cytokeratin 18 (KRT18) Goat Polyclonal Antibody

Product data:

Product Type:	Primary Antibodies
Applications:	WB
Recommended Dilution:	ELISA: 1:32000; WB: 0.1-0.3µg/ml
Reactivity:	Human (Expected from sequence similarity: Mouse, Rat, Dog, Pig, Cow)
Host:	Goat
Isotype:	IgG
Clonality:	Polyclonal
Immunogen:	Peptide with sequence C-EELDKYWSQQIE, from the internal region of the protein sequence according to NP_000215.1.
Formulation:	Supplied at 0.5 mg/ml in Tris saline, 0.02% sodium azide, pH7.3 with 0.5% bovine serum albumin. Aliquot and store at -20°C. Minimize freezing and thawing.
Concentration:	lot specific
Purification:	Purified from goat serum by ammonium sulphate precipitation followed by antigen affinity chromatography using the immunizing peptide.
Conjugation:	Unconjugated
Storage:	Store at -20°C as received.
Stability:	Stable for 12 months from date of receipt.
Gene Name:	keratin 18
Database Link:	NP_000215 Entrez Gene 16668 MouseEntrez Gene 294853 RatEntrez Gene 477601 DogEntrez Gene 3875 Human P05783
Synonyms:	CYK18; K18
Note:	Approx 48kDa band observed in lysates of cell lines A431, HeLa, MCF7 (calculated MW of 48.1kDa according to NP_000215.1). Recommended concentration: 0.1-0.3µg/ml. Reported variants represent identical protein: NP_000215.1, NP_954657.1.
Protein Pathways:	Pathogenic Escherichia coli infection



[View online »](#)

Product images:

TA326739 (0.1ug/ml) staining of HeLa lysate (35ug protein in RIPA buffer). Primary incubation was 1 hour. Detected by chemiluminescence.