

Product datasheet for **TA326737**

CD38 Goat Polyclonal Antibody

Product data:

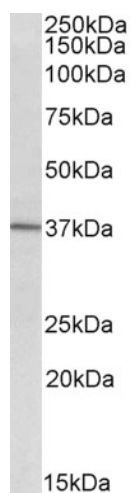
Product Type:	Primary Antibodies
Applications:	WB
Recommended Dilution:	ELISA: 1:128000; WB: 1-3µg/ml
Reactivity:	Human
Host:	Goat
Isotype:	IgG
Clonality:	Polyclonal
Immunogen:	Peptide with sequence C-EVHNLQPEKVQT, from the internal region of the protein sequence according to NP_001766.2.
Formulation:	Supplied at 0.5 mg/ml in Tris saline, 0.02% sodium azide, pH7.3 with 0.5% bovine serum albumin. Aliquot and store at -20°C. Minimize freezing and thawing.
Concentration:	lot specific
Purification:	Purified from goat serum by ammonium sulphate precipitation followed by antigen affinity chromatography using the immunizing peptide.
Conjugation:	Unconjugated
Storage:	Store at -20°C as received.
Stability:	Stable for 12 months from date of receipt.
Gene Name:	CD38 molecule
Database Link:	NP_001766 Entrez Gene 952 Human P28907
Synonyms:	ADPRC 1; T10
Note:	Approx 37kDa band observed in Human Spinal Cord cancer lysates (calculated MW of 34.3kDa according to NP_001766.2). The observed molecular weight corresponds to the glycosylated form. Recommended concentration: 1-3µg/ml.
Protein Families:	Cancer stem cells, Druggable Genome, ES Cell Differentiation/IPS, Induced pluripotent stem cells, Transmembrane



[View online »](#)

Protein Pathways: Calcium signaling pathway, Hematopoietic cell lineage, Metabolic pathways, Nicotinate and nicotinamide metabolism

Product images:



TA326737 (2ug/ml) staining of Human Spinal Cord cancer lysate (35ug protein in RIPA buffer). Primary incubation was 1 hour. Detected by chemiluminescence.