

## Product datasheet for **TA326736**

### STX11 Goat Polyclonal Antibody

#### Product data:

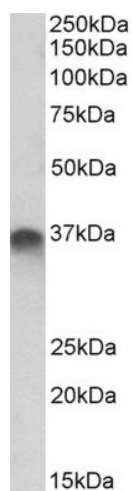
Product Type:	Primary Antibodies
Applications:	WB
Recommended Dilution:	ELISA: 1:128000; WB: 1-3µg/ml
Reactivity:	Human (Expected from sequence similarity: Rat, Dog)
Host:	Goat
Isotype:	IgG
Clonality:	Polyclonal
Immunogen:	Peptide with sequence C-KQADTLNVIELNVQK, from the internal region of the protein sequence according to NP_003755.2.
Formulation:	Supplied at 0.5 mg/ml in Tris saline, 0.02% sodium azide, pH7.3 with 0.5% bovine serum albumin. Aliquot and store at -20°C. Minimize freezing and thawing.
Concentration:	lot specific
Purification:	Purified from goat serum by ammonium sulphate precipitation followed by antigen affinity chromatography using the immunizing peptide.
Conjugation:	Unconjugated
Storage:	Store at -20°C as received.
Stability:	Stable for 12 months from date of receipt.
Gene Name:	syntaxin 11
Database Link:	<a href="#">NP_003755</a> <a href="#">Entrez Gene 292483 Rat</a> <a href="#">Entrez Gene 484019 Dog</a> <a href="#">Entrez Gene 8676 Human</a> <a href="#">O75558</a>
Synonyms:	FHL4; HLH4; HPLH4
Note:	Approx 36kDa band observed in Human Placenta lysates (calculated MW of 33.2kDa according to NP_003755.2). The observed molecular weight corresponds to earlier findings with different antibodies from other commercial sources. Recommended concentration: 1-3µg/ml.
Protein Families:	Druggable Genome



[View online »](#)

Protein Pathways: SNARE interactions in vesicular transport

**Product images:**



TA326736 (1ug/ml) staining of Placenta lysate (35ug protein in RIPA buffer). Primary incubation was 1 hour. Detected by chemiluminescence.