

## Product datasheet for **TA326734**

### HIF1 beta (ARNT) Goat Polyclonal Antibody

#### Product data:

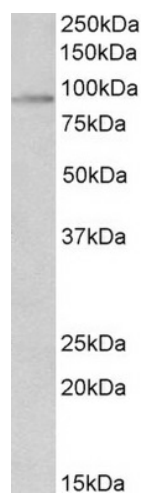
Product Type:	Primary Antibodies
Applications:	WB
Recommended Dilution:	ELISA: 1:4000; WB: 2-4µg/ml
Reactivity:	Human (Expected from sequence similarity: Mouse, Rat, Dog, Cow)
Host:	Goat
Isotype:	IgG
Clonality:	Polyclonal
Immunogen:	Peptide with sequence CNDKERFARSDDEQS, from the internal region (near N Terminus) of the protein sequence according to NP_001659.1;
Formulation:	Supplied at 0.5 mg/ml in Tris saline, 0.02% sodium azide, pH7.3 with 0.5% bovine serum albumin. Aliquot and store at -20°C. Minimize freezing and thawing.
Concentration:	lot specific
Purification:	Purified from goat serum by ammonium sulphate precipitation followed by antigen affinity chromatography using the immunizing peptide.
Conjugation:	Unconjugated
Storage:	Store at -20°C as received.
Stability:	Stable for 12 months from date of receipt.
Gene Name:	aryl hydrocarbon receptor nuclear translocator
Database Link:	<a href="#">NP_001659</a> <a href="#">Entrez Gene 11863 MouseEntrez Gene 25242 RatEntrez Gene 483185 DogEntrez Gene 405 Human P27540</a>
Synonyms:	bHLHe2; HIF-1-beta; HIF-1beta; HIF1-beta; HIF1B; HIF1BETA; TANGO
Note:	Approx 90kDa band observed in nuclear lysates of cell lines HeLa and HepG2 (calculated MW of 86.6kDa according to NP_001659.1). Recommended concentration: 2-4µg/ml. This antibody is expected to recognize all reported isoform 1 (NP_001659.1) only.
Protein Families:	Druggable Genome, Transcription Factors



[View online »](#)

Protein Pathways: Pathways in cancer, Renal cell carcinoma

### Product images:



TA326734 (2ug/ml) staining of HepG2 nuclear lysate (35ug protein in RIPA buffer). Primary incubation was 1 hour. Detected by chemiluminescence.