

Product datasheet for **TA326728**

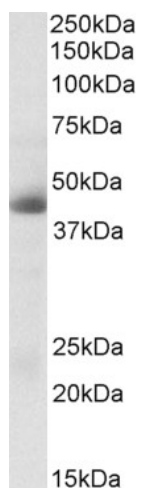
CA12 Goat Polyclonal Antibody

Product data:

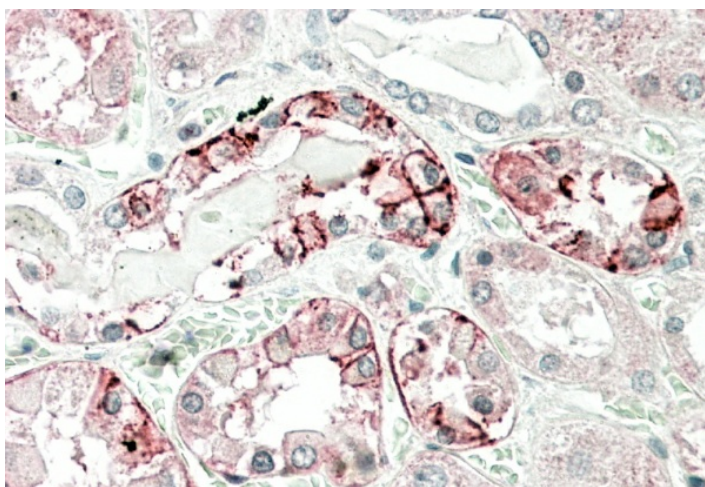
Product Type:	Primary Antibodies
Applications:	IHC, WB
Recommended Dilution:	WB: 0.3-1ug/ml, IHC: 5-10ug/mL
Reactivity:	Human
Host:	Goat
Isotype:	IgG
Clonality:	Polyclonal
Immunogen:	Peptide with sequence C-SHLQHVYKYGQE, from the internal region of the protein sequence according to NP_001209.1; NP_996808.1.
Formulation:	Supplied at 0.5 mg/ml in Tris saline, 0.02% sodium azide, pH7.3 with 0.5% bovine serum albumin. Aliquot and store at -20°C. Minimize freezing and thawing.
Concentration:	lot specific
Purification:	Purified from goat serum by ammonium sulphate precipitation followed by antigen affinity chromatography using the immunizing peptide.
Conjugation:	Unconjugated
Storage:	Store at -20°C as received.
Stability:	Stable for 12 months from date of receipt.
Gene Name:	carbonic anhydrase 12
Database Link:	NP_001209 Entrez Gene 771 Human O43570
Synonyms:	CAXII; HsT18816
Note:	Approx 45kDa band observed in Human Kidney lysates (calculated MW of 39.5kDa according to NP_001209.1). Recommended concentration: 0.3-1µg/ml. This antibody is expected to recognize both reported isoforms (NP_001209.1; NP_996808.1).
Protein Families:	Druggable Genome, Transmembrane
Protein Pathways:	Nitrogen metabolism



[View online »](#)

Product images:

TA326728 (0.3ug/ml) staining of Human Kidney lysate (35ug protein in RIPA buffer). Primary incubation was 1 hour. Detected by chemiluminescence.



TA326728 (5ug/ml) staining of paraffin embedded Human Kidney. Steamed antigen retrieval with citrate buffer pH 6, AP-staining.