

Product datasheet for TA326727

NR5A2 Goat Polyclonal Antibody

Product data:

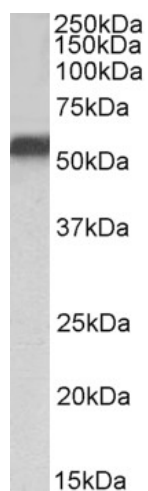
Product Type:	Primary Antibodies
Applications:	WB
Recommended Dilution:	ELISA: 1:128000; WB: 1-3µg/ml
Reactivity:	Human (Expected from sequence similarity: Mouse, Rat, Dog, Pig, Cow)
Host:	Goat
Isotype:	IgG
Clonality:	Polyclonal
Immunogen:	Peptide with sequence C-TDYDRSPFVTSPIS, from the internal region of the protein sequence according to NP_995582.1; NP_003813.1.
Formulation:	Supplied at 0.5 mg/ml in Tris saline, 0.02% sodium azide, pH7.3 with 0.5% bovine serum albumin. Aliquot and store at -20°C. Minimize freezing and thawing.
Concentration:	lot specific
Purification:	Purified from goat serum by ammonium sulphate precipitation followed by antigen affinity chromatography using the immunizing peptide.
Conjugation:	Unconjugated
Storage:	Store at -20°C as received.
Stability:	Stable for 12 months from date of receipt.
Gene Name:	nuclear receptor subfamily 5 group A member 2
Database Link:	NP_003813 Entrez Gene 26424 MouseEntrez Gene 60349 RatEntrez Gene 490252 DogEntrez Gene 2494 Human O00482
Synonyms:	B1F; B1F2; CPF; FTF; FTZ-F1; FTZ-F1beta; hB1F-2; LRH-1; LRH1
Note:	Approx 55kDa band observed in nuclear lysates of cell lines HeLa and HepG2 (calculated MW of 56.5kDa according to NP_003813.1). Recommended concentration: 1-3µg/ml. This antibody is expected to recognize both reported isoforms (NP_995582.1; NP_003813.1).
Protein Families:	Druggable Genome, Nuclear Hormone Receptor, Transcription Factors



[View online »](#)

Protein Pathways: Maturity onset diabetes of the young

Product images:



TA326727 (1ug/ml) staining of HepG2 nuclear lysate (35ug protein in RIPA buffer). Primary incubation was 1 hour. Detected by chemiluminescence.