

Product datasheet for **TA326722**

Chromogranin C (SCG2) Goat Polyclonal Antibody

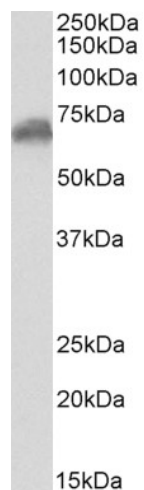
Product data:

Product Type:	Primary Antibodies
Applications:	WB
Recommended Dilution:	ELISA: 1:128000; WB: 0.3-1µg/ml
Reactivity:	Human (Expected from sequence similarity: Dog, Pig)
Host:	Goat
Isotype:	IgG
Clonality:	Polyclonal
Immunogen:	Peptide with sequence C-QELGKLTGPNNQKRE, from the internal region of the protein sequence according to NP_003460.2.
Formulation:	Supplied at 0.5 mg/ml in Tris saline, 0.02% sodium azide, pH7.3 with 0.5% bovine serum albumin. Aliquot and store at -20°C. Minimize freezing and thawing.
Concentration:	lot specific
Purification:	Purified from goat serum by ammonium sulphate precipitation followed by antigen affinity chromatography using the immunizing peptide.
Conjugation:	Unconjugated
Storage:	Store at -20°C as received.
Stability:	Stable for 12 months from date of receipt.
Gene Name:	secretogranin II
Database Link:	NP_003460 Entrez Gene 488550 Dog Entrez Gene 7857 Human P13521
Synonyms:	CHGC; EM66; SgII; SN
Note:	Approx 70kDa band observed in Human Brain (Cerebellum) lysates (calculated MW of 70.9kDa according to NP_003460.2). Recommended concentration: 0.3-1µg/ml.
Protein Families:	Secreted Protein, Transmembrane



[View online »](#)

Product images:



TA326722 (0.3ug/ml) staining of Human Cerebellum lysate (35ug protein in RIPA buffer). Primary incubation was 1 hour. Detected by chemiluminescence.