

Product datasheet for **TA326721**

Kininogen 1 (KNG1) Goat Polyclonal Antibody

Product data:

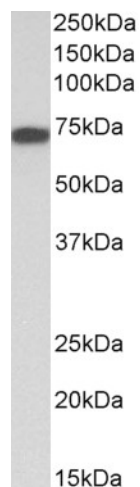
Product Type:	Primary Antibodies
Applications:	WB
Recommended Dilution:	ELISA: 1:128000; WB: 0.03-0.1µg/ml
Reactivity:	Human
Host:	Goat
Isotype:	IgG
Clonality:	Polyclonal
Immunogen:	Peptide with sequence C-PRDIPTNSPELE, from the internal region of the protein sequence according to NP_001095886.1; NP_000884.1; NP_001159923.1.
Formulation:	Supplied at 0.5 mg/ml in Tris saline, 0.02% sodium azide, pH7.3 with 0.5% bovine serum albumin. Aliquot and store at -20°C. Minimize freezing and thawing.
Concentration:	lot specific
Purification:	Purified from goat serum by ammonium sulphate precipitation followed by antigen affinity chromatography using the immunizing peptide.
Conjugation:	Unconjugated
Storage:	Store at -20°C as received.
Stability:	Stable for 12 months from date of receipt.
Gene Name:	kininogen 1
Database Link:	NP_000884 Entrez Gene 3827 Human P01042
Synonyms:	BDK; BK; KNG
Note:	Approx 70kDa band observed in Albumin-depleted Human Plasma lysates (calculated MW of 72.0kDa according to NP_001095886.1). Recommended concentration: 0.03-0.1µg/ml. This antibody is expected to recognize all reported isoforms (NP_001095886.1; NP_000884.1; NP_001159923.1).
Protein Families:	Druggable Genome, Secreted Protein



[View online »](#)

Protein Pathways: Complement and coagulation cascades

Product images:



TA326721 (0.03ug/ml) staining of Albumin-depleted Plasma lysate (35ug protein in RIPA buffer). Primary incubation was 1 hour. Detected by chemiluminescence.