

## Product datasheet for **TA326716**

### Lin28 (LIN28A) Mouse Monoclonal Antibody [Clone ID: 1G9H9]

#### Product data:

Product Type:	Primary Antibodies
Clone Name:	1G9H9
Applications:	WB
Recommended Dilution:	WB: 0.5 - 1 ug/mL
Reactivity:	Human
Host:	Mouse
Isotype:	IgG2b
Clonality:	Monoclonal
Immunogen:	Mouse monoclonal Lin28 antibody was raised against a 15 amino acid peptide near the carboxy terminus of human Lin28.
Formulation:	Lin28 Monoclonal Antibody is supplied in PBS containing 0.02% sodium azide.
Concentration:	1 mg/ml
Purification:	Lin28 Monoclonal Antibody is affinity chromatography purified via peptide column.
Conjugation:	Unconjugated
Storage:	Store at -20°C as received.
Stability:	Stable for 12 months from date of receipt.
Predicted Protein Size:	Predicted: 23 kDa
Gene Name:	lin-28 homolog A
Database Link:	<a href="#">NP_078950</a> <a href="#">Entrez Gene 79727 Human</a> <a href="#">Q9H9Z2</a>



[View online »](#)

**Background:**

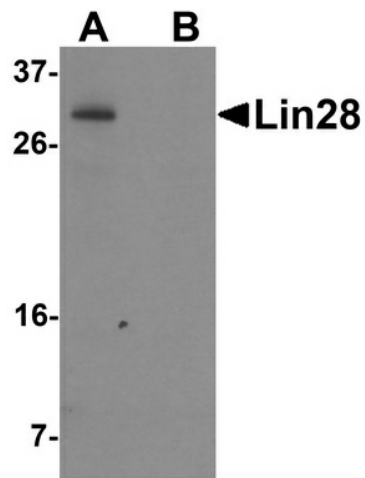
Lin28 Monoclonal Antibody: Lin28 is a transcription factor that was first identified through its key role in the pathway of developmental timing in *C. elegans*. The role of Lin28 in development suggested that it might be useful in the creation of stem cells that might be beneficial in cell replacement therapies in the treatment of several degenerative diseases. Artificial stem cells, termed induced pluripotent stem (iPS) cells, can be created by expressing Lin28 in addition to the transcription factors POU5F1, Sox2, and NANOG in mouse fibroblasts. More recently, experiments have demonstrated that iPS cells could be generated using expression plasmids expressing Lin28, Sox2, POU5F1 and c-Myc, eliminating the need for virus introduction, thereby addressing a safety concern for potential use of iPS cells in regenerative medicine.

**Synonyms:**

CSDD1; LIN-28; lin-28A; LIN28; ZCCHC1

**Protein Families:**

Transcription Factors

**Product images:**

Western blot analysis of Lin28 in Raji cell lysate with Lin28 antibody at 0.5 ug/mL in (A) the absence and (B) the presence of blocking peptide.