

Product datasheet for **TA326713**

LAMTOR1 Rabbit Polyclonal Antibody

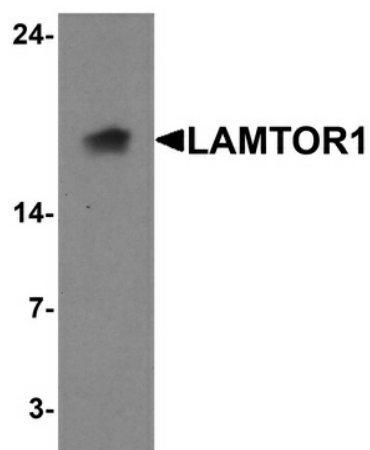
Product data:

Product Type:	Primary Antibodies
Applications:	IF, IHC, WB
Recommended Dilution:	WB: 1 - 2 ug/mL, ICC: 5 ug/mL, IF: 20 ug/mL
Reactivity:	Human, Mouse, Rat
Host:	Rabbit
Isotype:	IgG
Clonality:	Polyclonal
Immunogen:	Rabbit polyclonal LAMTOR1 antibody was raised against a 17 amino acid peptide near the amino terminus of human LAMTOR1
Formulation:	LAMTOR1 antibody is supplied in PBS containing 0.02% sodium azide.
Concentration:	1 mg/ml
Purification:	LAMTOR1 antibody is affinity chromatography purified via peptide column.
Conjugation:	Unconjugated
Storage:	Store at -20°C as received.
Stability:	Stable for 12 months from date of receipt.
Predicted Protein Size:	Predicted: 18 kDa; Observed: 18 kDa
Gene Name:	late endosomal/lysosomal adaptor, MAPK and MTOR activator 1
Database Link:	NP_060377 Entrez Gene 66508 MouseEntrez Gene 308869 RatEntrez Gene 55004 Human Q6IAA8
Background:	LAMTOR1 is a 161 amino acid membrane protein belonging to the LAMTOR family. It has been identified to interact with and recruit the four Rag GTPases (Rag A-D) to the surface of lysosomes (1). The mTORC1 kinase complex is a critical component in the regulation of cell growth (2). As part of the regulator complex, LAMTOR1 recruits the Rag GTPases and the mTORC1 complex to lysosomes, a key step in activation of the TOR signaling cascade by amino acids (3). LAMTOR1 may be involved in cholesterol homeostasis regulating LDL uptake and cholesterol release from late endosomes / lysosomes (4).
Synonyms:	C11orf59; p18; p27RF-Rho; PDRO; Ragulator1

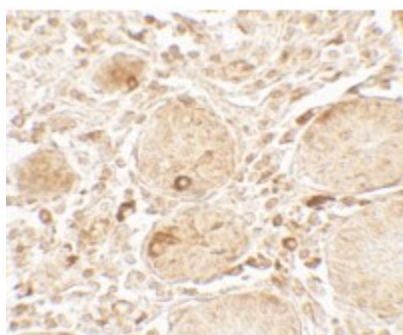


[View online »](#)

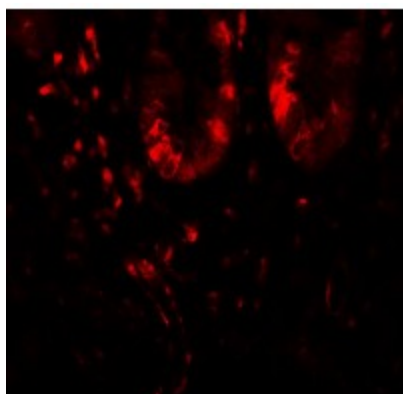
Product images:



Western blot analysis of LAMTOR1 in A431 cell lysate with LAMTOR1 antibody at 1 ug/ml.



Immunohistochemistry of LAMTOR1 in human small intestine tissue with LAMTOR1 antibody at 5 ug/mL.



Immunofluorescence of LAMTOR1 in human small intestine tissue with LAMTOR1 antibody at 20 ug/mL.