

## Product datasheet for **TA326711**

### PGC1 alpha (PPARGC1A) Rabbit Polyclonal Antibody

#### Product data:

Product Type:	Primary Antibodies
Applications:	IF, IHC, WB
Recommended Dilution:	WB: 1 - 2 ug/mL, ICC: 5 ug/mL, IF: 20 ug/mL
Reactivity:	Human, Mouse, Rat
Host:	Rabbit
Isotype:	IgG
Clonality:	Polyclonal
Immunogen:	PPARGC1A antibody was raised against a 19 amino acid peptide near the carboxy terminus of human PPARGC1A. The immunogen is located within the last 50 amino acids of PPARGC1A.
Formulation:	PPARGC1A antibody is supplied in PBS containing 0.02% sodium azide.
Concentration:	1 mg/ml
Purification:	PPARGC1A antibody is affinity chromatography purified via peptide column.
Conjugation:	Unconjugated
Storage:	Antibody can be stored at 4°C up to one year. Antibodies should not be exposed to prolonged high temperatures.
Stability:	Stable for 12 months from date of receipt.
Predicted Protein Size:	Predicted: 88 kDa; Observed: 96 kDa
Gene Name:	PPARG coactivator 1 alpha
Database Link:	<a href="#">NP_037393</a> <a href="#">Entrez Gene 19017 Mouse</a> <a href="#">Entrez Gene 83516 Rat</a> <a href="#">Entrez Gene 10891 Human</a> <a href="#">Q9UBK2</a>



[View online »](#)

**Background:**

The peroxisome proliferator-activated receptor gamma coactivator 1-alpha (PPARGC1A), also known as LEM-6, is a transcriptional coactivator that regulates the genes involved in energy metabolism (1). PPARGC1A interacts with PPARgamma, which permits the interaction of PPARGC1A with multiple transcription factors. PPARGC1A can interact with, and regulate the activities of, cAMP response element binding protein (CREB) and nuclear respiratory factors (NRFs). It provides a direct link between external physiological stimuli and the regulation of mitochondrial biogenesis, and is a major factor that regulates muscle fiber type determination (2). PPARGC1A may be also involved in the development of obesity (3).

**Synonyms:**

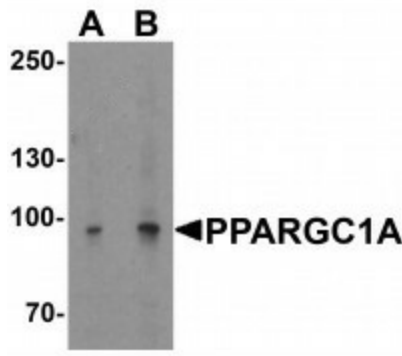
LEM6; PGC-1(alpha); PGC-1alpha; PGC-1v; PGC1; PGC1A; PPARGC1

**Protein Families:**

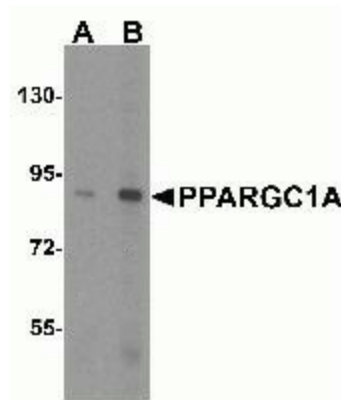
Druggable Genome, Transcription Factors

**Protein Pathways:**

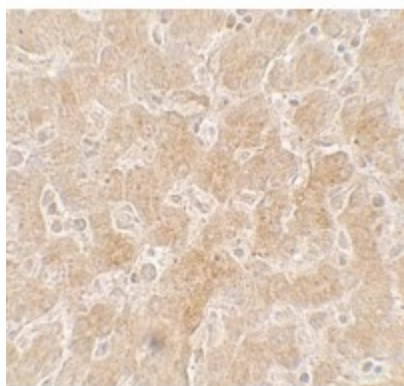
Adipocytokine signaling pathway, Huntington's disease, Insulin signaling pathway

**Product images:**

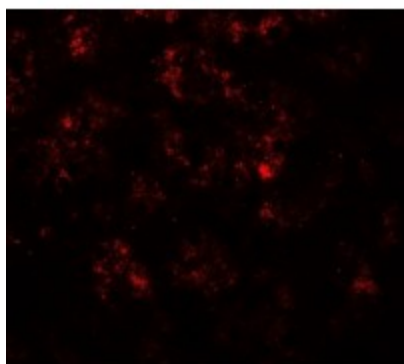
Western blot analysis of PPARGC1A in mouse liver tissue lysate with PPARGC1A antibody at (A) 1 and (B) 2ug/ml.



Western blot analysis of PPARGC1A expression in human liver tissue lysate with PPARGC1A antibody at (A) 1 and (B) 2ug/ml.



Immunohistochemistry of PPARGC1A in human liver tissue with PPARGC1A antibody at 5ug/ml.



Immunofluorescence of PPARGC1A in human liver tissue with PPARGC1A antibody at 20ug/ml.