

Product datasheet for **TA326710**

SUZ12 Rabbit Polyclonal Antibody

Product data:

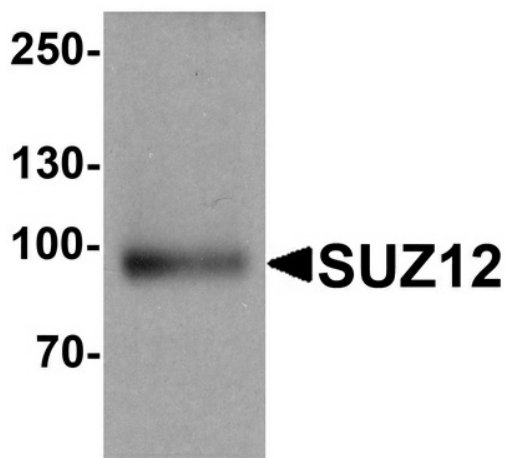
Product Type:	Primary Antibodies
Applications:	IF, IHC, WB
Recommended Dilution:	WB: 1 - 2 ug/mL, ICC: 5 ug/mL, IF: 20 ug/mL
Reactivity:	Human
Host:	Rabbit
Isotype:	IgG
Clonality:	Polyclonal
Immunogen:	SUZ12 antibody was raised against a 19 amino acid peptide near the center of human SUZ12.
Formulation:	SUZ12 antibody is supplied in PBS containing 0.02% sodium azide.
Concentration:	1 mg/ml
Purification:	SUZ12 antibody is affinity chromatography purified via peptide column.
Conjugation:	Unconjugated
Storage:	Store at -20°C as received.
Stability:	Stable for 12 months from date of receipt.
Predicted Protein Size:	Predicted: 81 kDa; Observed: 96 kDa
Gene Name:	SUZ12 polycomb repressive complex 2 subunit
Database Link:	NP_056170 Entrez Gene 23512 Human Q15022
Background:	The Polycomb group (PcG) genes contribute to the maintenance of cell identity, cell cycle regulation and oncogenesis (1). SUZ12 (suppressor of zeste 12) is a 90 - 95 kDa member of the polycomb group of transcriptional regulators (2). It is part of a transcription repression complex termed PRC2 (Polycomb repressive complex 2) that methylates histones in the nucleus, resulting in homeotic (pattern-inducing) gene silencing. It contains one C2H2-type zinc finger region and a C-terminal VEFS-box (3,4). SUZ12 is overexpressed in breast and colon cancer. SUZ12 may be a cause of endometrial stromal tumors (5).
Synonyms:	CHET9; JJAZ1



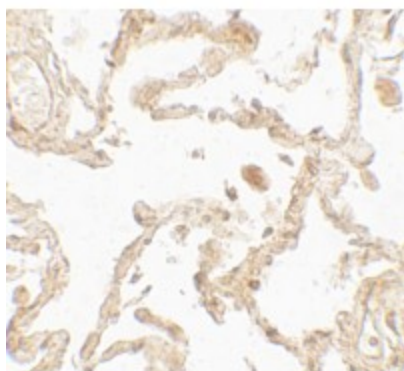
[View online »](#)

Protein Families: Transcription Factors

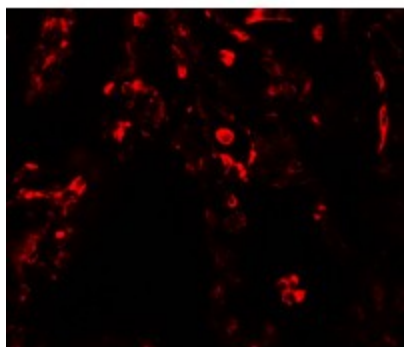
Product images:



Western blot analysis of SUZ12 in human liver tissue lysate with SUZ12 antibody at 1 ug/ml.



Immunohistochemistry of SUZ12 in human lung tissue with SUZ12 antibody at 5 ug/mL.



Immunofluorescence of SUZ12 in human lung tissue with SUZ12 antibody at 20 ug/mL.