

Product datasheet for **TA326709**

ARF6 Rabbit Polyclonal Antibody

Product data:

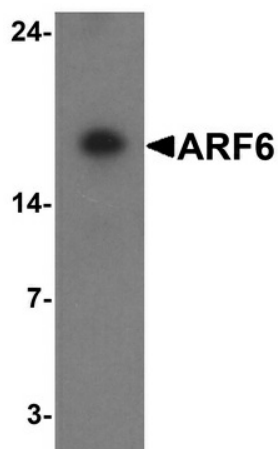
Product Type:	Primary Antibodies
Applications:	IF, IHC, WB
Recommended Dilution:	WB: 1 - 2 ug/mL, ICC: 5 ug/mL, IF: 20 ug/mL
Reactivity:	Human, Mouse, Rat
Host:	Rabbit
Isotype:	IgG
Clonality:	Polyclonal
Immunogen:	ARF6 antibody was raised against a 19 amino acid peptide near the carboxy terminus of human ARF6.
Formulation:	ARF6 antibody is supplied in PBS containing 0.02% sodium azide.
Concentration:	1 mg/ml
Purification:	ARF6 antibody is affinity chromatography purified via peptide column.
Conjugation:	Unconjugated
Storage:	Store at -20°C as received.
Stability:	Stable for 12 months from date of receipt.
Predicted Protein Size:	Predicted: 19 kDa; Observed: 18 kDa
Gene Name:	ADP ribosylation factor 6
Database Link:	NP_001654 Entrez Gene 11845 MouseEntrez Gene 79121 RatEntrez Gene 382 Human P62330
Background:	The ADP-ribosylation factor 6 (ARF6) is a member of the ARF family, which is part of the RAS superfamily (1). The ARF proteins are small guanine nucleotide-binding proteins that stimulate the ADP-ribosyltransferase activity of cholera toxin and play a role in vesicular trafficking and as activators of phospholipase D (2). The product of this gene is localized to the plasma membrane (3), and regulates vesicular trafficking, remodelling of membrane lipids, and signaling pathways that lead to actin remodeling (4).
Synonyms:	DKFZp564M0264



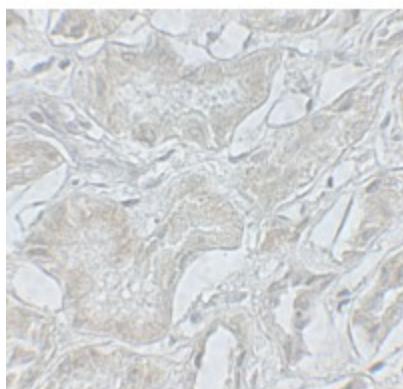
[View online »](#)

Protein Pathways: Endocytosis, Fc gamma R-mediated phagocytosis

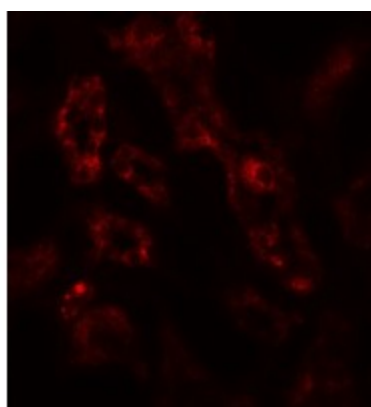
Product images:



Western blot analysis of ARF6 in rat liver tissue lysate with ARF6 antibody at 1 ug/ml.



Immunohistochemistry of ARF6 in human kidney tissue with ARF6 antibody at 5 ug/mL.



Immunofluorescence of ARF6 in human kidney tissue with ARF6 antibody at 20 ug/mL.