

Product datasheet for **TA326708**

UCP1 Rabbit Polyclonal Antibody

Product data:

Product Type:	Primary Antibodies
Applications:	IHC, WB
Recommended Dilution:	WB: 1 - 2 ug/mL, ICC: 2.5 ug/mL
Reactivity:	Human, Mouse, Rat
Host:	Rabbit
Isotype:	IgG
Clonality:	Polyclonal
Immunogen:	UCP1 antibody was raised against a 17 amino acid peptide near the carboxy terminus of human UCP1 (GenBank accession.
Formulation:	UCP1 antibody is supplied in PBS containing 0.02% sodium azide.
Concentration:	1 mg/ml
Purification:	UCP1 antibody is affinity chromatography purified via peptide column.
Conjugation:	Unconjugated
Storage:	Store at -20°C as received.
Stability:	Stable for 12 months from date of receipt.
Predicted Protein Size:	Predicted: 34 kDa; Observed: 36 kDa
Gene Name:	uncoupling protein 1
Database Link:	NP_068605 Entrez Gene 22227 Mouse Entrez Gene 24860 Rat Entrez Gene 7350 Human P25874
Background:	The mitochondrial brown fat uncoupling protein 1 (UCP1) is a member of the family of mitochondrial anion carrier proteins (MACP) (1). UCPS separate oxidative phosphorylation from ATP synthesis with energy dissipated as heat, also referred to as the mitochondrial proton leak. UCPS facilitate the transfer of anions from the inner to the outer mitochondrial membrane and the return transfer of protons from the outer to the inner mitochondrial membrane. They also reduce the mitochondrial membrane potential in mammalian cells (1). UCP1 is expressed only in brown adipose tissue, a specialized tissue which functions to produce heat (1).



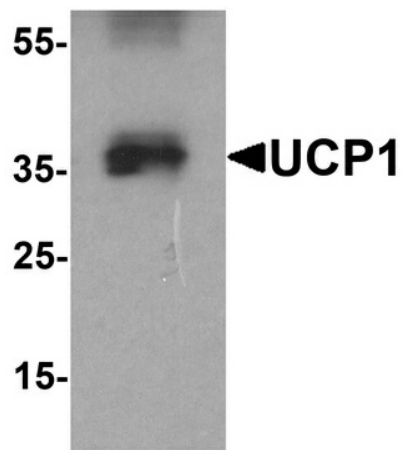
[View online »](#)

Synonyms: SLC25A7; UCP

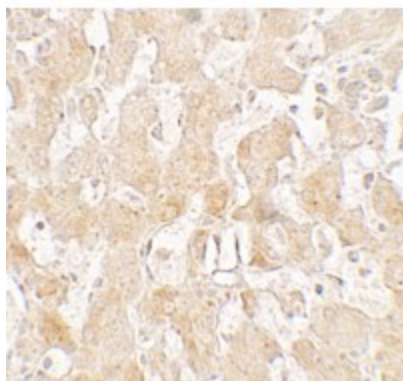
Protein Families: Druggable Genome

Protein Pathways: Huntington's disease, PPAR signaling pathway

Product images:



Western blot analysis of UCP1 in HeLa cell lysate with UCP1 antibody at 1 ug/ml.



Immunohistochemistry of UCP1 in human liver tissue with UCP1 antibody at 2.5 ug/mL.