

## Product datasheet for TA326706

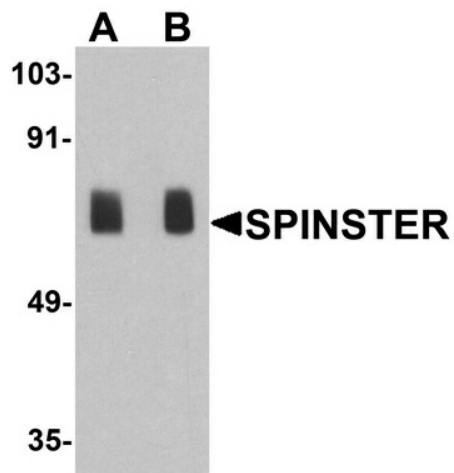
### SPNS1 Rabbit Polyclonal Antibody

#### Product data:

Product Type:	Primary Antibodies
Applications:	WB
Recommended Dilution:	WB: 1 - 2 ug/mL
Reactivity:	Human
Host:	Rabbit
Isotype:	IgG
Clonality:	Polyclonal
Immunogen:	SPINSTER antibody was raised against an 18 amino acid peptide near the amino terminus of human SPINSTER.
Formulation:	SPINSTER antibody is supplied in PBS containing 0.02% sodium azide.
Concentration:	1 mg/ml
Purification:	SPINSTER antibody is affinity chromatography purified via peptide column.
Conjugation:	Unconjugated
Storage:	Store at -20°C as received.
Stability:	Stable for 12 months from date of receipt.
Predicted Protein Size:	Predicted: 58 kDa; Observed: 70 kDa
Gene Name:	sphingolipid transporter 1 (putative)
Database Link:	<a href="#">NP_001135920</a> <a href="#">Entrez Gene 83985 Human</a> <a href="#">Q9H2V7</a>
Background:	SPINSTER, also known as SPNS1 or SPIN1, is a 528 amino acid multi-pass membrane protein that localizes to the inner mitochondrial membrane and belongs to the spinster subfamily of the major facilitator superfamily (1). SPINSTER interacts with Bcl-x and Bcl-2 and, via this interaction, is thought to be involved in necrotic or autophagic cell death (2). The related protein SPNS2 is critical for the normal lymphocyte localization and mammalian immune system function (1,3).
Synonyms:	HSpin1; LAT; nrs; PP2030; SPIN1; SPINL


[View online »](#)

## Product images:



Western blot analysis of SPINSTER in human placenta tissue lysate with SPINSTER antibody at (A) 1 and (B) 2 ug/ml.