

## Product datasheet for **TA326705**

### CCR7 Rabbit Polyclonal Antibody

#### Product data:

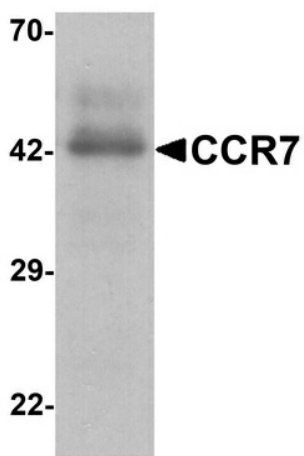
Product Type:	Primary Antibodies
Applications:	IF, IHC, WB
Recommended Dilution:	WB: 1 - 2 ug/mL, ICC: 5 ug/mL, IF: 20 ug/mL
Reactivity:	Human
Host:	Rabbit
Isotype:	IgG
Clonality:	Polyclonal
Immunogen:	CCR7 antibody was raised against a 15 amino acid peptide near the center of human CCR7.
Formulation:	CCR7 antibody is supplied in PBS containing 0.02% sodium azide.
Concentration:	1 mg/ml
Purification:	CCR7 antibody is affinity chromatography purified via peptide column.
Conjugation:	Unconjugated
Storage:	Store at -20°C as received.
Stability:	Stable for 12 months from date of receipt.
Predicted Protein Size:	Predicted: 42 kDa; Observed: 42 kDa
Gene Name:	C-C motif chemokine receptor 7
Database Link:	<a href="#">NP_001829</a> <a href="#">Entrez Gene 1236 Human P32248</a>
Background:	The CCR7 protein is a member of the G protein-coupled receptor family. This receptor was identified as a gene induced by the Epstein-Barr virus (EBV), and is thought to be a mediator of EBV effects on B lymphocytes. This receptor is expressed in various lymphoid tissues and activates B and T lymphocytes. It has been shown to control the migration of memory T cells to inflamed tissues, as well as stimulate dendritic cell maturation (1,2). The chemokine (C-C motif) ligand 19 (CCL19) has been reported to be a specific ligand of this receptor (3).
Synonyms:	BLR2; CD197; CDw197; CMKBR7; EB11
Protein Families:	Druggable Genome, GPCR, Transmembrane



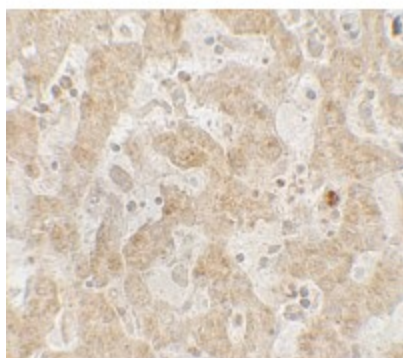
[View online »](#)

Protein Pathways: Chemokine signaling pathway, Cytokine-cytokine receptor interaction

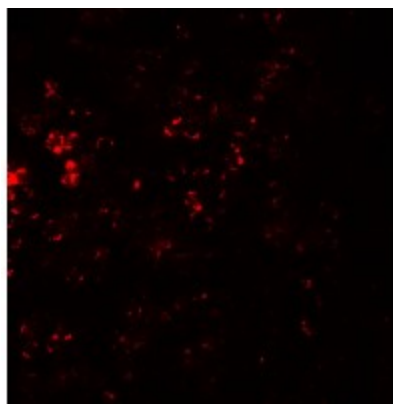
**Product images:**



Western blot analysis of CCR7 in human spleen tissue lysate with CCR7 antibody at 1 ug/ml.



Immunohistochemistry of CCR7 in human spleen tissue with CCR7 antibody at 5 ug/mL.



Immunofluorescence of CCR7 in human spleen tissue with CCR7 antibody at 20 ug/mL.