

## Product datasheet for **TA326703**

### ITCH Rabbit Polyclonal Antibody

#### Product data:

Product Type:	Primary Antibodies
Applications:	WB
Recommended Dilution:	WB: 1 - 2 ug/mL
Reactivity:	Human, Mouse, Rat
Host:	Rabbit
Isotype:	IgG
Clonality:	Polyclonal
Immunogen:	ITCH antibody was raised against a 15 amino acid peptide near the amino terminus of human ITCH
Formulation:	ITCH antibody is supplied in PBS containing 0.02% sodium azide.
Concentration:	1 mg/ml
Purification:	ITCH antibody is affinity chromatography purified via peptide column.
Conjugation:	Unconjugated
Storage:	Store at -20°C as received.
Stability:	Stable for 12 months from date of receipt.
Predicted Protein Size:	Predicted: 99 kDa; Observed: 99 kDa
Gene Name:	itchy E3 ubiquitin protein ligase
Database Link:	<a href="#">NP_001244066</a> <a href="#">Entrez Gene 83737 Human</a> <a href="#">Q96J02</a>

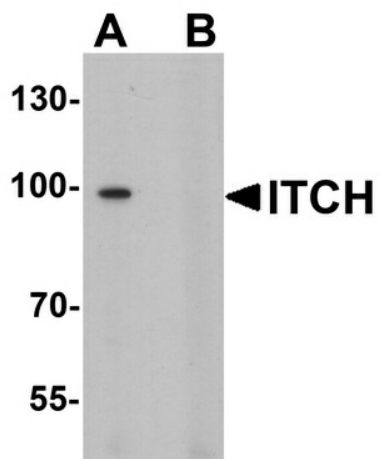
**Background:** The Itchy E3 ubiquitin protein ligase (ITCH) is a member of the Nedd4 family of HECT domain E3 ubiquitin ligases (1). HECT domain E3 ubiquitin ligases transfer ubiquitin from E2 ubiquitin-conjugating enzymes to protein substrates, thus targeting specific proteins for lysosomal degradation. ITCH plays a role in multiple cellular processes including erythroid and lymphoid cell differentiation and the regulation of immune responses (2). In B cells, ITCH is thought to associate with latent membrane protein 2A (LMP2A) of Epstein-Barr virus, specifically down-regulating its activity in B cell signaling (3). Mutations in this gene are a cause of syndromic multisystem autoimmune disease (4).



[View online »](#)

Synonyms: ADMFD; AIF4; AIP4; dJ468O1.1; NAPP1

**Product images:**



Western blot analysis of ITCH in 3T3 cell lysate with ITCH antibody at 1 ug/ml in (A) the absence and (B) the presence of blocking peptide.